

Model 3102D HV Power Supply

User's Manual

9231570A



Copyright 2004, Canberra Industries, Inc. All rights reserved.

The material in this document, including all information, pictures, graphics and text, is the property of Canberra Industries, Inc. and is protected by U.S. copyright laws and international copyright conventions.

Canberra expressly grants the purchaser of this product the right to copy any material in this document for the purchaser's own use, including as part of a submission to regulatory or legal authorities pursuant to the purchaser's legitimate business needs.

No material in this document may be copied by any third party, or used for any commercial purpose, or for any use other than that granted to the purchaser, without the written permission of Canberra Industries, Inc.

Canberra Industries, 800 Research Parkway, Meriden, CT 06450
Tel: 203-238-2351 FAX: 203-235-1347 <http://www.canberra.com>

The information in this document describes the product as accurately as possible, but is subject to change without notice.

Printed in the United States of America.

Table of Contents

1. Introduction	1
2. Controls and Connectors	2
3. Operating Instructions	5
Installation	5
Internal Controls	5
Polarity Selection	6
J4, Brightness Control	6
Inhibit Control	6
Automatic Overload Shutdown	7
Setup	7
Divide By 10 Output	7
Preventive Maintenance	8
4. Circuit Description	9
A. Specifications	10
Inputs	10
Outputs	10
Controls	10
Indicators	10
Performance	11
Connectors	11
Power Requirements	12
Physical	12
Environmental	12
B. Installation Considerations	13

Notes

1. Introduction

The Canberra Model 3102D High Voltage Power Supply is a single-width NIM module designed primarily for use with photomultiplier and electron multiplier tubes. But it can be used with any detector requiring a bias voltage up to 2000 V and a current level of 1 mA or less.

The 3102D allows the user to select from two continuously adjustable outputs, one ranging from ± 15 to ± 2000 V dc and the other from ± 1.5 to ± 200 V dc. The output voltage is measured and displayed by a three-digit voltmeter. In addition, this unit allows the user to select the output voltage polarity with an internal control.

The 3102D can withstand any overload or short circuit for an indefinite period of time. It can be set using an internal jumper to allow for a manual reset or an automatic reset when the fault condition is removed.

The 3102D features an output rise time of five seconds to protect preamplifiers and detectors from excessive surge currents while charging.

2. Controls and Connectors

This is a brief description of the front panel controls and connectors. For more detailed information, refer to Appendix A, Specifications.

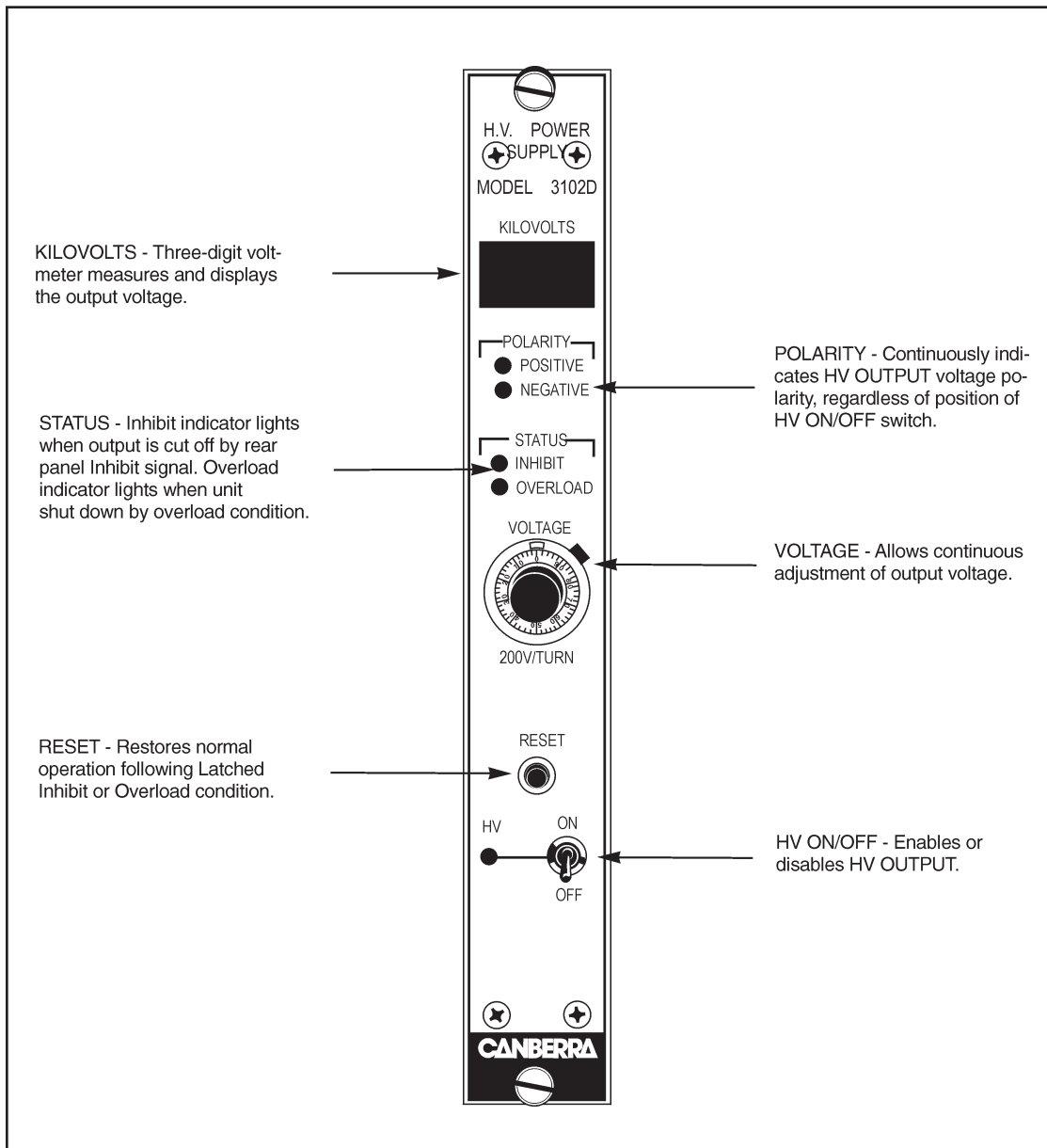


Figure 1 Front Panel Controls

This is a brief description of the rear panel connectors. For more detailed information, refer to Appendix A, Specifications.

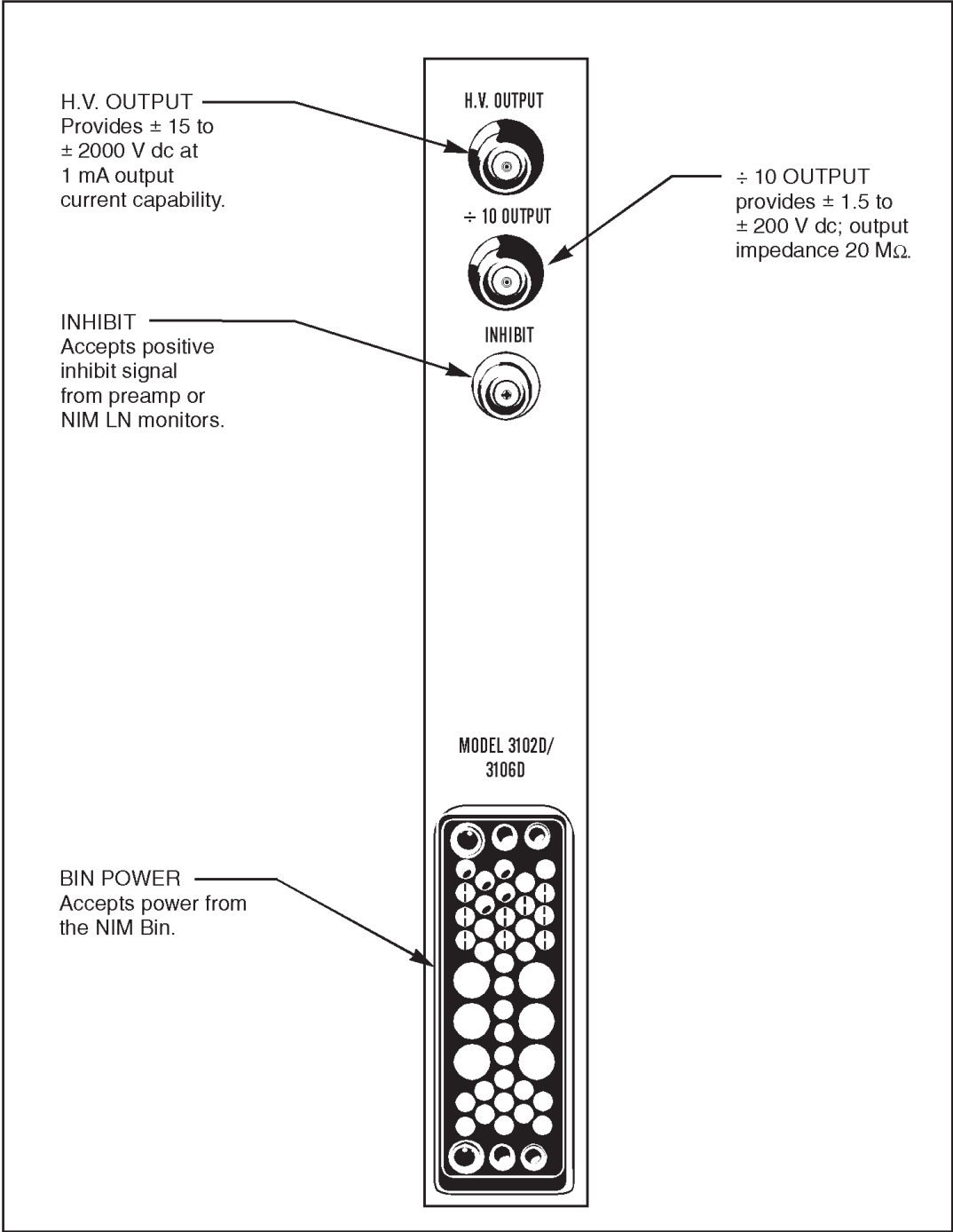


Figure 2 Rear Panel Controls

This is a brief descriptions of the internal controls. For more detailed information, refer to Appendix A, Specifications.

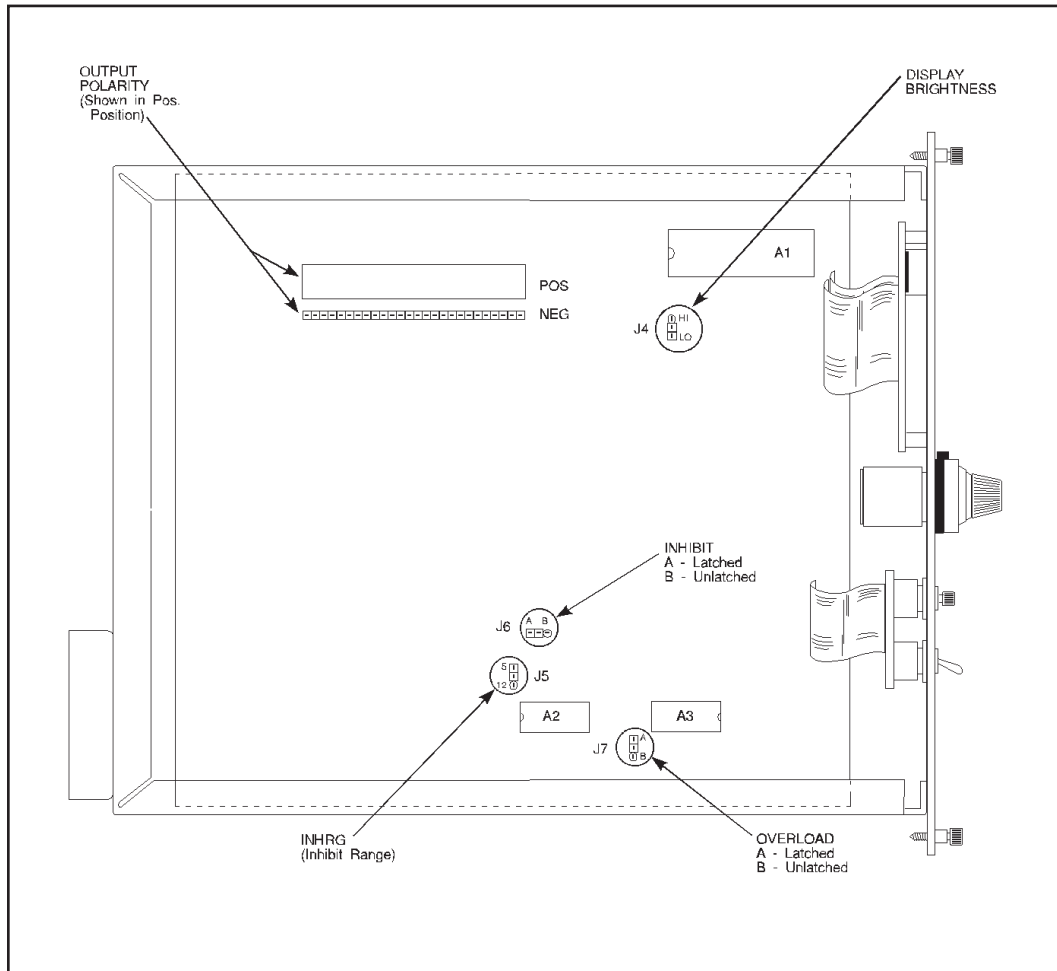


Figure 3 Internal Controls

3. Operating Instructions

The Model 3102D is factory set for positive output polarity. If negative polarity is required, change the internal polarity board before installing the unit in the NIM bin (refer to the Internal Controls section, below, for instructions).

Installation

The Canberra Model 2000 NIM bin and Power Supply or equivalent power supply conforming to DOE/ER-00457T will accommodate the Model 3102D. The right side cover of the unit acts as a guide for insertion of the unit. Secure the module in place by turning the two front panel captive screws clockwise until finger tight. It is recommended that the NIM bin power switch be OFF whenever any module is installed or removed.

The Model 3102D can be safely operated where the ambient air temperature is between 0 °C and +50 °C. Perforations in the top and bottom of the unit's frame permit cooling air to circulate through the module. When rack mounted along with other heat generating equipment, be sure to provide adequate clearance for a flow of cooling air through the NIM bin.

Internal Controls

Remove the unit's left side cover to change the internal controls. Figure 3 shows the position of the internal controls.



WARNING The Model 3102D generates lethal high voltage, which will be present for several minutes after the unit is switched off.

Before removing the unit from the NIM bin, set the VOLTAGE control to 0.00 volts and the HV ON/OFF switch to OFF.



Avoid the risk of injury. Leave the unit in the NIM bin until the voltage reduces to 0 volts, as indicated on the front panel digital display.

Polarity Selection

Output polarity can be changed by removing the unit's left side cover and changing the polarity selector board's location. The board is symmetrical by design. Polarity is not affected by orientation. When the unit's NIM bin power is turned on, the front panel POLARITY preview LEDs will indicate the current polarity selection. Canberra recommends that the polarity selection be verified before turning on the unit's NIM bin power. Factory set to POSitive.

J4, Brightness Control

Jumper J4 sets the display brightness to HIGH or LOW (factory set to LOW). In the HI position, the display is at its brightest, but the unit will draw significantly more current. See the Power Requirements specification in Appendix A for details.

Inhibit Control

The Inhibit Function, which is independent of the Voltage Control's setting, allows the output voltage to be conditionally turned off or latched off by grounding or by applying a logic 0 (≤ 0.7 V) to the rear panel INHIBIT connector. The front panel INHIBIT STATUS indicator lights when the output has been inhibited.

Jumper J5

The INHIBIT input is compatible with all Canberra preamps for either position of Jumper plug J5; it isn't necessary to set jumper plug J5 to match the HV INHIBIT logic high level of the associated Canberra preamp.

Jumper J5 selects the pull up/clamp voltage level of the INHIBIT input for compatibility with INHIBIT signals from instruments made by other manufacturers. With J5 in position 5 (factory setting), the pull up/clamp level is set to +5 volts. With J5 set to position 12 the pull up/clamp level is +12 volts. Please consult the manual provided with your instrument for its requirements.

Jumper J6

Jumper J6 selects the Latched Inhibit Mode or the Conditional Inhibit Mode.

In the Latched Mode (jumper position A; factory setting), pressing the front panel RESET button when a logic 1 or open circuit is present at the INHIBIT connector will restore the output voltage. In the Conditional Mode (jumper position B), an INHIBIT input of ≥ 2 V or an open circuit enables the output.

Automatic Overload Shutdown

One of the 3102D's circuits monitors the output load current and automatically disables the outputs for an overload or a fault condition.

A short duration arc-over or turn-on charging transient will not cause shut down. The front panel OVERLOAD STATUS indicator lights when the unit has been shut down.

The unit can be programmed to either automatically resume operation when the fault is removed or to require a manual reset.

Jumper J7

With Jumper J7 in position A (factory setting), the front panel RESET button must be pressed to resume normal operation after the fault is removed. With Jumper J7 set to position B, the output will automatically resume when the fault condition is removed.

Setup

After setting the internal controls, install the Model 3102D in the NIM bin. Connect the load to the appropriate rear panel SHV connector, set the HV ON/OFF switch to OFF, and set the VOLTAGE control to zero. Set the NIM bin power to ON; the appropriate polarity LED should light, indicating the polarity selected.

Set the HV ON/OFF switch to ON and the VOLTAGE control to the desired setting. The front panel digital display will indicate the HV OUTPUT voltage in kilovolts (kV).

Divide By 10 Output

The 3102D has two rear panel output connectors: HV OUTPUT and $\div 10$ OUTPUT. Canberra recommends that *only one* of these outputs be used at a time.

For detectors operating at relatively low bias voltages and requiring little current, the $\div 10$ output should be used. This output is provided by means of a simple voltage divider network, which has an impedance of 20 M Ω . Therefore, loading effects have to be taken into account if there is a significant current drain.

The advantage of the $\div 10$ output is that the zero offset and the control are better by a factor of 10 over that of the HV OUTPUT. Most detectors (for example, Canberra PIPS detectors, Si(Li) detectors, and Low Energy (LEGe) detectors), take very little current and are thus compatible with the $\div 10$ output. The $\div 10$ output should never be used with scintillation detectors which draw relatively large currents.

Preventive Maintenance

Preventive maintenance is not required for this unit.

When needed, the front panel of the unit may be cleaned. Remove power from the unit before cleaning. Use only a soft cloth dampened with warm water and make sure the unit is fully dry before restoring power. Because of access holes in the NIM wrap, DO NOT use any liquids to clean the wrap, side or rear panels.

4. Circuit Description

A functional schematic of the Model 3102D is included at the rear of the manual. The high voltage module is basically a dc to dc converter which converts low voltage dc power to a high voltage dc output. This output voltage is highly regulated and filtered, and can be varied by the front panel VOLTAGE control. The input to the high voltage dc to dc converter is obtained from a conventional NIM power supply and uses $\pm 12\text{V}$ dc and $\pm 24\text{ V}$ dc.

An oscillator determines a high frequency ($\approx 37\text{ kHz}$) at which all amplification, high voltage transformation, rectification, and filtering occurs. The amplification is a function of a control voltage which performs the functions of control and regulation. A sample of the output voltage is compared with a reference voltage in the sensing circuit. The sensing circuit generates the control voltage to set and maintain a fixed high voltage output.

A. Specifications

Inputs

INPUT POWER – The Model 3102D is powered from a standard NIM Bin and power supply, such as the Model 2100, 2000 or 1000.

INHIBIT – Logic low or ground inhibits the HV outputs; max logic low ≤ 0.7 V; logic high ≥ 1.3 V or open circuit enables.

Outputs

HV OUTPUT – ± 15 to ± 2000 V dc, continuously adjustable; 1 mA output current capability; rear panel SHV connector.

± 10 OUTPUT – ± 1.5 to ± 200 V dc, continuously adjustable; $Z_{out} = 20$ M Ω ; rear panel SHV connector.

Controls

ON/OFF – Front panel toggle switch enables or disables output.

RESET – Pushbutton restores normal operation following a latched Inhibit and/or overload fault condition.

VOLTAGE – Front panel 10-turn control permits continuous adjustment of the output voltage.

POLARITY – Internal programming plug sets output polarity.

Indicators

HV OUTPUT – 3-digit panel meter; 0 to 2.00 kV.

POLARITY – Front panel LEDs indicate polarity continuously.

Performance

INHIBIT – LED indicates Inhibit status.

OVERLOAD – LED indicates overload status.

Performance

RIPPLE AND NOISE – $\leq 3 \mu\text{V}$ peak to peak at $1 \mu\text{A}$.

OUTPUT STABILITY – Long term drift of output voltage is $\leq 0.01\%/hr.$ and $\leq 0.02\%/8 hr.$ at constant input line voltage, load, and ambient temperature after a 30 minute warmup.

TEMPERATURE COEFFICIENT – $\leq \pm 50 \text{ ppm}/^\circ\text{C}$ after 30 minute warmup.

REGULATION – $\leq 0.001\%$ variation in output voltage over the load range and $\leq 0.001\%$ for $\pm 0.1\%$ input voltage change within the operating range at constant ambient temperature.

OVERLOAD PROTECTION – Power supply will withstand any overload, including a short circuit for an indefinite period.

CURRENT LIMIT – 1.3 mA maximum.

DIAL ACCURACY – $\pm 1\%$ of full scale.

METER ACCURACY – $\pm 0.6\%$ of full scale plus 10 volts.

Connectors

HV OUTPUT – Rear panel SHV.

$\div 10$ OUTPUT – Rear panel SHV.

INHIBIT – Rear panel BNC.

Power Requirements

+24 V – 70 mA +12 V – 160 mA*

-24 V – 10 mA -12 V – 150 mA

*With Brightness Control J4 set to HI, +12 V will draw 265 mA, which exceeds the normal Bin allotment of 167 mA for a single-width module.

Physical

SIZE – Standard single width NIM module 3.43 x 22.12 cm, (1.35 x 8.71 in.) per DOE/ER-0457T.

NET WEIGHT – 1.4 kg (3.1 lb).

SHIPPING WEIGHT – 2.4 kg (5.3 lb).

Environmental

OPERATING TEMPERATURE – 0 to 50 °C.

OPERATING HUMIDITY – 0-80% relative, non-condensing.

Tested to the environmental conditions specified by EN 61010, Installation Category I, Pollution Degree 2.

B. Installation Considerations

This unit complies with all applicable European Union requirements.

Compliance testing was performed with application configurations commonly used for this module; i.e. a CE compliant NIM Bin and Power Supply with additional CE compliant application-specific NIM were racked in a floor cabinet to support the module under test.

During the design and assembly of the module, reasonable precautions were taken by the manufacturer to minimize the effects of RFI and EMC on the system. However, care should be taken to maintain full compliance. These considerations include:

- A rack or tabletop enclosure fully closed on all sides with rear door access
- Single point external cable access
- Blank panels to cover open front panel Bin area
- Compliant grounding and safety precautions for any internal power distribution
- The use of CE compliant accessories such as fans, UPS, etc.

Any repairs or maintenance should be performed by a qualified Canberra service representative. Failure to use exact replacement components, or failure to reassemble the unit as delivered, may affect the unit's compliance with the specified EU requirements.

Notes

Warranty

Canberra (we, us, our) warrants to the customer (you, your) that for a period of ninety (90) days from the date of shipment, software provided by us in connection with equipment manufactured by us shall operate in accordance with applicable specifications when used with equipment manufactured by us and that the media on which the software is provided shall be free from defects. We also warrant that (A) equipment manufactured by us shall be free from defects in materials and workmanship for a period of one (1) year from the date of shipment of such equipment, and (B) services performed by us in connection with such equipment, such as site supervision and installation services relating to the equipment, shall be free from defects for a period of one (1) year from the date of performance of such services.

If defects in materials or workmanship are discovered within the applicable warranty period as set forth above, we shall, at our option and cost, (A) in the case of defective software or equipment, either repair or replace the software or equipment, or (B) in the case of defective services, reperform such services.

LIMITATIONS

EXCEPT AS SET FORTH HEREIN, NO OTHER WARRANTIES OR REMEDIES, WHETHER STATUTORY, WRITTEN, ORAL, EXPRESSED, IMPLIED (INCLUDING WITHOUT LIMITATION, THE WARRANTIES OF MERCHANTABILITY OR FITNESS FOR A PARTICULAR PURPOSE) OR OTHERWISE, SHALL APPLY. IN NO EVENT SHALL CANBERRA HAVE ANY LIABILITY FOR ANY SPECIAL, EXEMPLARY, PUNITIVE, INDIRECT OR CONSEQUENTIAL LOSSES OR DAMAGES OF ANY NATURE WHATSOEVER, WHETHER AS A RESULT OF BREACH OF CONTRACT, TORT LIABILITY (INCLUDING NEGLIGENCE), STRICT LIABILITY OR OTHERWISE. REPAIR OR REPLACEMENT OF THE SOFTWARE OR EQUIPMENT DURING THE APPLICABLE WARRANTY PERIOD AT CANBERRA'S COST, OR, IN THE CASE OF DEFECTIVE SERVICES, REPERFORMANCE AT CANBERRA'S COST, IS YOUR SOLE AND EXCLUSIVE REMEDY UNDER THIS WARRANTY.

EXCLUSIONS

Our warranty does not cover damage to equipment which has been altered or modified without our written permission or damage which has been caused by abuse, misuse, accident, neglect or unusual physical or electrical stress, as determined by our Service Personnel.

We are under no obligation to provide warranty service if adjustment or repair is required because of damage caused by other than ordinary use or if the equipment is serviced or repaired, or if an attempt is made to service or repair the equipment, by other than our Service Personnel without our prior approval.

Our warranty does not cover detector damage due to neutrons or heavy charged particles. Failure of beryllium, carbon composite, or polymer windows, or of windowless detectors caused by physical or chemical damage from the environment is not covered by warranty.

We are not responsible for damage sustained in transit. You should examine shipments upon receipt for evidence of damage caused in transit. If damage is found, notify us and the carrier immediately. Keep all packages, materials and documents, including the freight bill, invoice and packing list.

Software License

When purchasing our software, you have purchased a license to use the software, not the software itself. Because title to the software remains with us, you may not sell, distribute or otherwise transfer the software. This license allows you to use the software on only one computer at a time. You must get our written permission for any exception to this limited license.

BACKUP COPIES

Our software is protected by United States Copyright Law and by International Copyright Treaties. You have our express permission to make one archival copy of the software for backup protection. You may not copy our software or any part of it for any other purpose.