

Model 1270 DeskTop InSpector

User's Manual

9230882C 6/99



Copyright 1999, Packard BioScience Company. All rights reserved.

The material in this manual, including all information, pictures, graphics and text, is the property of Packard BioScience Company and is protected by U.S. copyright laws and international copyright conventions. No material in this manual may be reproduced, published, translated, distributed or displayed by any means without written permission from Canberra Industries, a division of Packard BioScience Company.

Canberra Industries, 800 Research Parkway, Meriden, CT 06450
Tel: 203-238-2351 FAX: 203-235-1347 <http://www.canberra.com>

The information in this manual describes the product as accurately as possible, but is subject to change without notice.

Printed in the United States of America.

Table of Contents

1. Introduction.	1
2. Setup and Configuration.	2
Unpacking the DeskTop InSpector	2
Connecting the System	2
More than One InSpector in the System	4
Grounding the System	4
3. Hardware Operation	5
Power Switch	5
The Status Indicators	5
The Connectors	7
Programmable Electronics	9
The ADC	10
The HVPS	11
The Stabilizer	11
Tuning the Display Environment	13
4. MCA Input Definition	15
The MID Wizard	15
The MCA Input Definition Editor.	17
Basic Concepts	18
Starting the MCA Input Definition (MID) Editor.	18
Building an MCA Definition	19
Adding an MCA.	19
Interpreting the Definition Entry	21
Deleting an MCA	22
Defining an MCA	23
Device Setup	23

MCA	24
Amplifier	25
The Settings	25
MCA	26
ADC.	26
Stabilizer	27
Amplifier	30
High Voltage	32
Power Management.	33
Input.	34
Saving the Input Definition	35
Save and Save As	36
Using Save As.	36
Changing the Summary View	36
Editing an MCA Definition	37
Opening an Input Definition File	37
Viewing the File Details	38
Editing the Definition	39
The New Command.	39
The Input Definition Report.	39
Using MCA Definition Tables	39
Viewing the Current Database	40
Loading and Unloading Definitions.	40
Loading the Database.	41
Unloading the Database.	41

A. Technical Information 43

Status Screen Entries	43
Stabilizer	43
Rear Panel Connectors	43

B. Specifications.	45
Input/Output	45
Indicators	46
Performance	46
HVPS	46
Amplifier	47
ADC	48
Digital Stabilizer	49
Pileup Rejector	49
Acquisition	49
Physical	50
Ordering Information	50
Options	50
Minimum Computer Requirements	50
 Index	 52

1. Introduction

This manual includes information on unpacking and setting up your DeskTop InSpector.

- Chapter 2 serves as a guide to unpacking and connecting your new DeskTop InSpector.
- Chapter 3 introduces the DeskTop InSpector's programmable electronics, and describes the use of each function.
- Chapter 4 covers the MID Wizard and the MID Editor, which help you quickly set up your system.
- Appendix A discusses the status screen entries for the Stabilizer and describes the rear panel connectors.
- Appendix B is a full listing of the DeskTop InSpector's specifications.

When you've completed your setup, you'll find complete operating instructions in the Genie-2000 manual set.

2. Setup and Configuration

This chapter serves as a guide to unpacking and connecting the system. Software installation is covered in Appendix A of the *Genie-2000 Operations Manual*.

Unpacking the DeskTop InSpector

When you receive your DeskTop InSpector hardware, examine it carefully for evidence of damage caused in transit. If damage is found, notify Canberra and the carrier immediately.

Use the following checklists to verify that you have received all system components.

Basic System

Your package should contain the following items:

- The DeskTop InSpector acquisition electronics unit.
- This manual.
- One computer communications cable.
- One ac/dc adapter.

System Options

If you ordered optional DeskTop InSpector items, your package will include any additional items you ordered.

Complete System

A complete system consists of all of the items in the Basic System, plus a computer. All software will have been installed on the computer and the system will have been configured and tested at the factory.

Connecting the System

This section provides step-by-step instructions for connecting the system cables to the DeskTop InSpector's rear panel connectors (Figure 1).

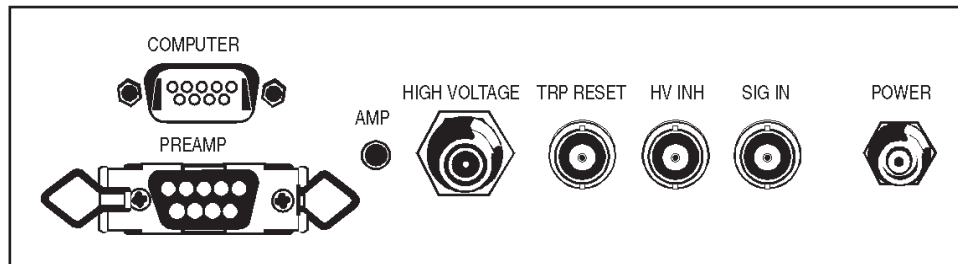


Figure 1 The Rear Panel Connectors

The Computer Connector

The 3 m Model C1715-10 Computer Cable carries computer commands and spectral data between the computer and the DeskTop InSpector. Connect the cable between the DeskTop InSpector's Computer connector and your computer's communications (COM) port connector.

Note Since most laptop computers have power management features which shut off power to non-essential circuits, be sure that the power to your laptop computer's serial port is *on* before trying to communicate with the DeskTop InSpector.

The Preamp Connector

Connect the 9-pin to 9-pin Preamplifier cable between the InSpector's PREAMP connector and the preamplifier's power connector.

The High Voltage Connector

Connect the High Voltage cable between the InSpector's High Voltage connector and the preamp's High Voltage Input connector.

The TRP Reset Connector

If your system includes a Model 2101 TRP Preamplifier, connect a cable between the InSpector's TRP RESET connector and the 2101's INHIBIT connector.

With the system properly connected and powered up, the amplifier's output will be seen at the InSpector's rear panel AMP test point. If there is no output, the 2101 preamp's Inhibit pulse width may be set incorrectly. Refer to "Adjusting the TRP Reset Pulse" in Appendix D, "Technical Information" of the Genie-2000 *Operations Manual* for instructions on adjusting the 2101's Inhibit pulse width for proper operation.

The HV Inhibit Connector

The High Voltage Inhibit feature shuts down the high voltage supply if the detector warms up. If you are using this feature, connect a cable between the InSpector's HV INH connector and the preamp's HV INHIBIT connector.

Signal In

Connect a cable between the InSpector's SIG IN connector and the preamplifier's output signal connector.

Power

Connect the ac adapter to the InSpector's POWER connector.

More than One InSpector in the System

If you have more than one DeskTop InSpector, each one will have to be connected to a different com port, such as COM1 and COM2. Each DeskTop InSpector must be set for the com port that you are connecting it to. This is done in the MID Editor (refer to "Com Port and Baud Rates" on page 24 for more information).

Grounding the System

It's not necessary to ground the DeskTop InSpector system in most applications. However in extreme environmental conditions, the DeskTop InSpector might be susceptible to oscillations or noise due to ground loops, radio frequency interference (RFI), or electromagnetic interference (EMI). When grounding the DeskTop InSpector is required, a ground connector can be attached to any of the screws on the bottom of its case; all of these screws make positive electrical contact with both circuit and chassis ground.

3. Hardware Operation

This chapter introduces the DeskTop InSpector's indicators and programmable electronics and describes the purpose and use of each of the DeskTop InSpector's functions.

Power Switch

The DeskTop InSpector's power switch is located on the left side of the unit, toward the rear. An internal lithium battery retains spectral data in the memory even when the power switch is turned off.

The Status Indicators

The DeskTop InSpector's front panel status indicators (Figure 2) show the status of: power on, acquisition, high voltage, and high voltage fault.

Power Indicator

When the DeskTop InSpector's power is on, the PWR indicator on the left side of the front panel glows.

Acquisition Indicator

When data acquisition is active, the ACQ indicator on the left side of the front panel glows.

High Voltage Indicator

When high voltage is present at the rear panel High Voltage connector, the HV indicator on the right side of the front panel glows.

High Voltage Fault Indicator

When a high voltage fault, such as an inhibit or overload, occurs, the FLT indicator on the right side of the front panel glows.

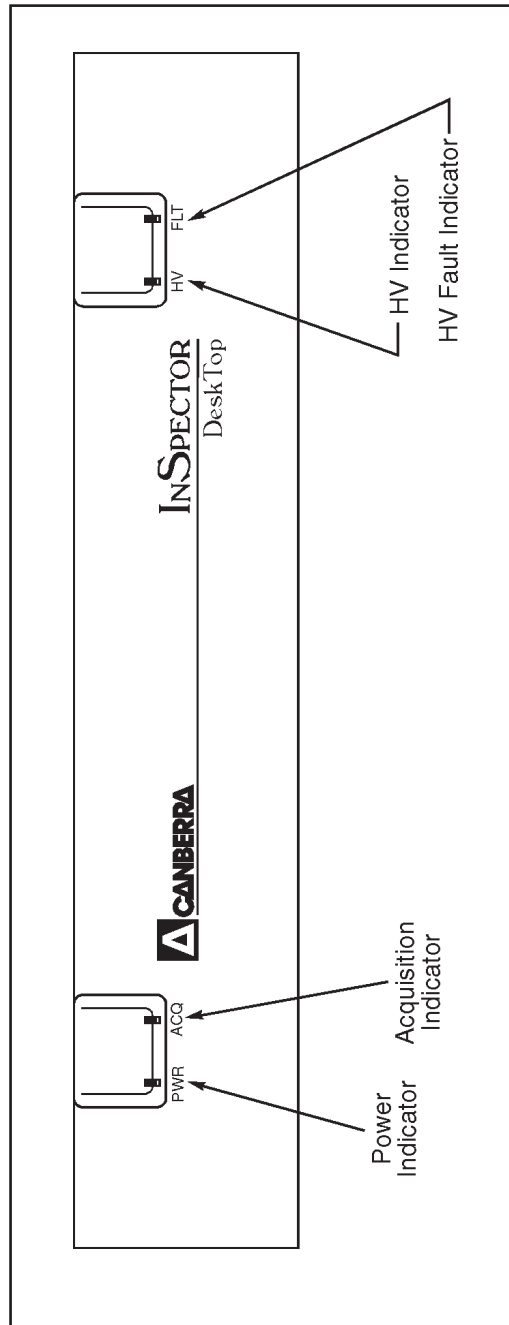


Figure 2 The Desktop Inspector's Front Panel

The Connectors

This section covers the seven connectors and the test point on the DeskTop InSpector's rear panel (Figure 3).

Computer

The computer cable, which carries data between the DeskTop InSpector and the host personal computer, attaches to this connector.

Note Since most laptop computers have power management features which shut off power to non-essential circuits, you'll have to make sure that the power to your laptop computer's serial port is *on* before trying to communicate with the DeskTop InSpector.

Preamp

The preamplifier cable, which attaches to this connector, provides power from the DeskTop InSpector to the preamp.

Amp

The Amp test point allows you to monitor the amplifier output while manually adjusting the amplifier's pole/zero or to verify the performance of the automatic pole/zero, which is covered in detail in "Pole/Zero" in Appendix D, "Technical Information", of the *Genie-2000 Operations Manual*. It is also used when adjusting the width of a Transistor Reset Preamplifier's (TRP's) Inhibit (Reset) pulse, which is described in "Adjusting the TRP Reset Pulse" in the same Appendix.

High Voltage

An SHV cable is attached to this connector to supply the operating bias to the detector.

TRP Reset

If your system includes a Model 2101 TRP Preamplifier, connect a cable between the InSpector's TRP RESET connector and the 2101's INHIBIT connector.

HV Inh

The High Voltage Inhibit feature shuts down the high voltage supply if the detector warms up. If you are using this feature, connect a cable between the InSpector's HV INH connector and the preamp's HV INHIBIT connector.

Sig In

Connect a cable between the InSpector's SIG IN connector and the preamplifier's output signal connector.

Power

Connect the ac/dc adapter to the InSpector's POWER connector.

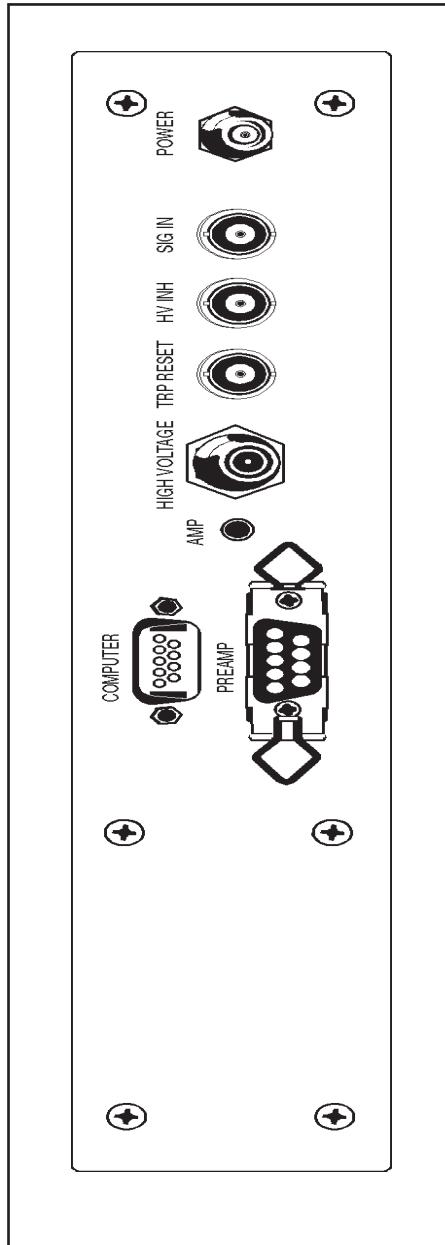


Figure 3 The Desktop InSpector's Rear Panel

Programmable Electronics

The DeskTop InSpector's front end electronics are fully programmable, eliminating physical switches, knobs and jumpers. Functions such as changing the detector bias and reversing the high voltage polarity are software controlled as well. The initial setting of the programmable functions is made in the MID Editor when first defining an Input; this procedure is fully explained in "The Settings" on page 25. In addition, most of these settings can be changed while acquiring data, as explained under "Adjust" in the Gamma Acquisition and Analysis chapter in the *Genie-2000 Operations Manual* or the *S509 Alpha Acquisition and Analysis Manual*.

The DeskTop InSpector's internal amplifier receives the output pulses of the external preamplifier, shapes them and amplifies them so that they are more suitable for analysis. The output of the amplifier is passed to the internal Analog-to-Digital Converter (ADC). The amplifier's programmable controls are: Coarse Gain, Fine Gain, Super-fine Gain, Shaping, PUR, Input Polarity, Preamp Type, automatic and manual Pole/Zero, Inhibit Polarity.

Gain

The amplifier's gain, the amount of amplification that the input signal is given before it is sent to the ADC, is set by the coarse gain, fine gain and super-fine gain controls. The fine gain and super-fine gain controls multiply the coarse gain setting to yield the final gain setting of the amplifier. The super-fine gain control can be used to establish a specific gain (energy per channel).

Shaping

For the ADC to be able to process the input signal, the amplifier must do more than amplify it; it must also change the shape of the signal. The DeskTop InSpector offers two shaping modes, Fast (approximately 1 μ s shaping time constant), for a sodium iodide detector, and Slow (approximately 4 μ s shaping time constant), for a germanium detector.

PUR

Pulse pileup is a condition where two pulses from the preamplifier are so close together in time that the ADC could see them as one. When PUR is on, these piled up pulses are ignored by the ADC and a correction is provided to the DeskTop InSpector's Live Timer circuit.

Input Polarity

The amplifier's Input Polarity control allows you to match the polarity of the amplifier's Input to that of your preamplifier's output signal.

Preamp Type

The DeskTop InSpector can process step inputs from a Transistor Reset Preamplifier (TRP) or tail-pulse inputs from a Resistor-Capacitor (RC) preamplifier.

Pole/Zero

The DeskTop InSpector's amplifier can be either automatically or manually pole/zeroed.

Auto P/Z: The START control initiates automatic pole/zero, which performs a set of iterative calculations and adjustments to match the preamplifier output to the amplifier input.

Manual P/Z: In some unusual circumstances, the auto pole/zero may fail to converge to an optimal value. The slider control allows you to manually adjust the pole/zero setting. For specific information on how to perform a manual pole/zero, refer to "Manual Pole/Zero" in Appendix D, "Technical Information", of the *Genie-2000 Operations Manual*.

Inhibit Polarity

TRP preamps output an inhibit (reset) signal which turns off the amplifier and the ADC when the input signal is invalid. This control allows you to match the polarity of the DeskTop InSpector's inhibit input to the polarity of the TRP preamp's inhibit output signal.

The ADC

The DeskTop InSpector's ADC receives the amplifier's output pulses, sorts them by amplitude, and stores each converted pulse in memory, building a histogram of spectral data. The ADC has four programmable controls: Conversion Gain, LLD, ULD and Zero.

Conversion Gain

One of the factors affecting the generation of a pulse height spectrum is the system resolution or conversion gain; that is, the number of discrete voltage levels – or channels – into which the input pulses will be sorted. For instance, a conversion gain of 8192, sorting the inputs into 8192 discrete levels, has twice the resolution of a conversion gain of 4096.

LLD/ULD

The DeskTop InSpector's MCA contains a circuit which examines each input to see if is greater in amplitude than the LLD setting and lesser in amplitude than the ULD setting. Inputs which are within this energy window are converted by the DeskTop InSpector's ADC. Inputs not inside this window are discarded.

Zero

In most cases, channel one of the spectrum is made to correspond to a zero energy input (zero intercept). This means that the location of a given pulse in the spectrum is linearly proportional to the height of the pulse's input signal. In some cases, however, the Zero control can be used to offset the spectrum by up to $\pm 5\%$ of the ADC's current conversion gain. The ADC's zero is factory-set for each conversion gain so that a 0% setting of this control corresponds to the zero intercept at channel 3.

The HVPS

The High Voltage Power Supply's (HVPS) programmable controls are: Range, Voltage Limit and Voltage, which set the bias voltage for the detector, and Status and Reset.

Range

The Range control sets HVPS's absolute voltage limit to positive 1300 volts, which is used with a sodium iodide or cadmium telluride detector, or positive or negative 5000 volts, which is used with a detector requiring very little bias current, such as a germanium detector.

Voltage Limit

For operating safety, the Voltage Limit establishes the HVPS's maximum output voltage within the selected range.

Voltage

The Voltage control sets the HVPS's actual output to a voltage between zero and the Voltage Limit.

Reset

When a fault caused by an overload or an Inhibit occurs, the HVPS will be turned *off*. After the fault condition has been cleared, click on **Reset** to reset the HVPS, then turn it *on* again with the Status control.

The Stabilizer

The DeskTop InSpector's programmable digital stabilizer provides both zero and gain stabilization in applications involving long count times or high count rates. It accomplishes this by using reference peaks in the spectrum and correcting the ADC's conversion gain or its zero intercept, or both, to keep these peaks from drifting.

The stabilizer can be turned On or Off or set to Hold in the MID Editor or the Acquisition and Analysis application. Putting the Stabilizer on "Hold" lets the software remember the Stabilizer's adjustments for successive counts, provided the operating conditions are similar.

The Stabilizer's programmable controls are: Gain and Zero Centroids, Gain and Zero Window width, Gain and Zero window Spacing, Gain and Zero Mode, Gain and Zero Rate Divisors and Correction Range for the gain. Figure 4 shows the relationship between the Stabilizer's Centroid, Window and window Spacing on a typical peak.

Gain Centroid

This control sets the reference channel at the high end of the spectrum for gain stabilization, since gain drift is more pronounced in the upper channels.

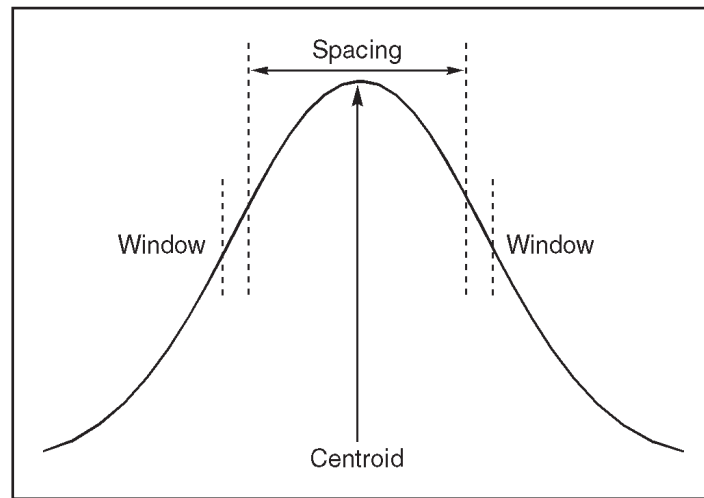


Figure 4 Relationship Between Stabilizer Functions

Zero Centroid

This control sets the reference channel at the low end of the spectrum for zero intercept stabilization, which prevents interference from the effects of gain drift.

Gain and Zero Window

These two controls set the Gain and Zero stabilizer window width (in channels) that the stabilizer is to use as its sampling range for each Mode.

Gain and Zero Spacing

These two controls set the spacing (in channels) between the upper and lower sampling windows for each Mode.

Gain and Zero Mode

The Stabilizer's Gain or Zero, or both, can be set to Off, On or Hold.

- On enables stabilization for the specified mode, allowing the Stabilizer to compare the incoming data to the Mode's Centroid and Window settings, then compensate for data below (or above) the Centroid.
- Off disables stabilization for the specified mode and sets the correction adjustment to zero.
- Hold disables stabilization for the specified mode and maintains the current correction adjustment at the Stabilizer's output.

Tuning the Display Environment

If the drift in either mode (zero or gain) exceeds the Correction Range, the overrange flag will be set and that mode will be changed to *hold*. Set that mode to *off* to clear the overrange flag, then correct the cause of the excessive drift before returning the mode to *on*.

Correction rng

This control selects the Gain Correction range that can be provided to correct for drift: $\pm 1\%$ for a germanium detector or $\pm 10\%$ for a sodium iodide detector.

Gain and Zero Rate Div

The Rate Divisor controls adjust the count rate dividers at the input to the correction registers for each Mode. For high count rate reference peaks, increasing the Divider value will smooth out the correction applied to the system and minimize any peak broadening.

Tuning the Display Environment

The DeskTop InSpector's performance is most affected by the communications burden being placed on the system. The more communications you demand of your system, the slower the response will be. For instance, the software is at its busiest when the DeskTop InSpector is acquiring data and scaling it for display.

To get the absolute best performance, set your system up as follows:

- Under Display/Preferences, set the plot mode to "Normal Plot", which is meant to be used during data acquisition. Using the "Full Plot" mode, which is meant for close interaction with an acquired spectrum, will slow update rates to 10 seconds or more.
- To find the fastest update rate (Display/Preferences) by setting the update rate to "0", start an acquisition and note how much Real Time passes with each update. Add 1/2 to 1 second to this to establish a your best update rate. This allows some system capacity for processing mouse clicks, marker and cursor interactions, etc.
- You should normally turn off the Marker Info status page during acquisition. When this page is displayed, the system has to calculate centroids, area, integral, etc. at each update. This adds a processing burden that slows the update rate. If you do need to use the Markers Info page, to monitor an ROI for instance, make sure the markers are set around the ROI. If you leave the markers set to full spectrum, there is more data to analyze, which will make your screen update noticeably slower.
- As the following table shows, the update rate also depends on the size of the spectrum. A 512 channel NaI spectrum updates much more quickly than an 8K Ge spectrum.

Spectrum Size	19.2 kbaud	57 kbaud
1024 channels	2.0 - 2.4 sec.	1.2 - 1.4 sec.
4096 channels	2.4 - 2.6 sec.	1.9 - 2.1 sec.
8192 channels	2.8 - 3.2 sec.	2.4 - 2.6 sec.

Though the DeskTop InSpector is capable of serial communications at up to 115 kbaud, most notebook computers don't work well at such fast data transfer rates. In addition, most notebooks have a smaller communications buffer, which means that even if capable of a high baud rate, they will slow down dramatically if asked to communicate with another device, such as a printer, while the DeskTop InSpector is acquiring data.

Interestingly, trying to run at a rate that is too fast actually slows the system down. This is because the communications circuitry is not keeping up, drops characters, errors are generated and the system retries. The repeated retries consume considerable CPU resources. Under these circumstances a system that may update the screen in 2-1/2 seconds at 19.2 kbaud, may slow down to 10-20 seconds at 57 kbaud (or, in extreme cases, may lose communications entirely).

You can optimize your DeskTop InSpector's communications by making several trials to look for the best performance. Start at a high baud rate and, if you don't get performance as good as, or better than, the table below, try a lower rate. Repeat this until you see an improvement. Be sure the tests are made under your standard operating conditions.

For example, if you are going to print while acquiring data, you will probably need to lower the baud rate. The same is true if you are using the S500 Genie-2000 Basic Spectroscopy software with its copy protection key instead of the InSpector Basic Spectroscopy software.

4. MCA Input Definition

The first step in using your DeskTop InSpector is to create an MCA Input Definition (MID).

MID Wizard or MID Editor?

For most systems, you'll want to use the MID Wizard to help you set up your MCA's Input Definition quickly and easily.

If your Input Definition is more complex than the MID Wizard was designed to handle, you'll have to use the MID Editor to create your definition. It is covered in detail starting on page 17.

The MID Wizard

To use the MID Wizard, open the Genie-2000 folder and select the MID Wizard icon to see the Step 1 screen.

Step 1

The first screen (Figure 5) lets you select the MCA you want to create a definition for. Choose the DeskTop InSpector MCA, then select the **Next** button.

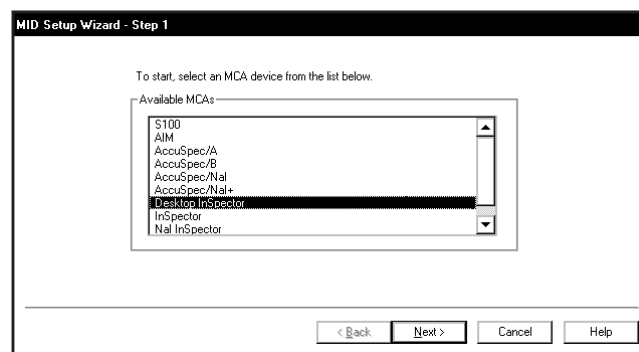


Figure 5 Step 1

Step 2

The Step 2 screen will ask you to define the MCA's Full Memory assignment, Communications port and Baud Rate, as shown Figure 6.

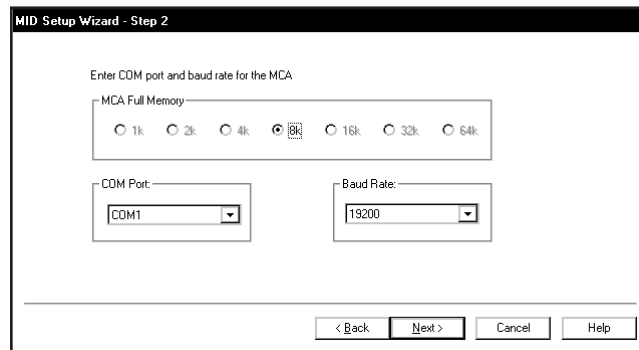


Figure 6 Step 2

Steps 3 and 4

You won't see the screens for Steps 3 and 4; these steps are not used when setting up a DeskTop InSpector MCA.

Step 5

The screen in Figure 7 asks you to define the high voltage power supply's Range, Voltage limit and Voltage.

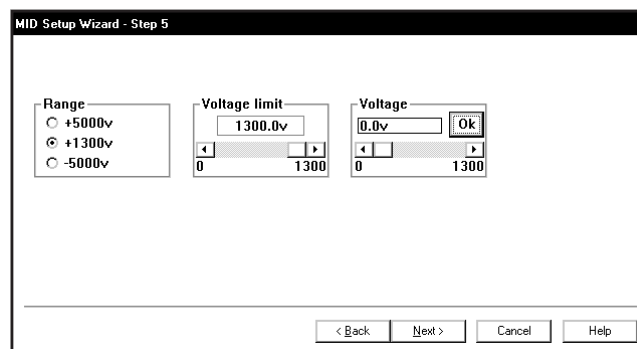


Figure 7 Step 5

Step 6

The Step 6 screen in Figure 8 asks for a Detector Type and acquisition memory size in Channels, and requires that an Input Name be entered.

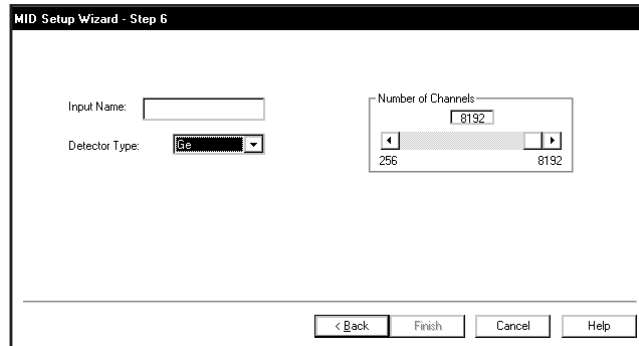


Figure 8 Step 6

Ending the Definition

To complete your Input Definition, select **Finish**. The input that you just defined will be stored as an MID file named `inputname.MID` and automatically loaded into the MCA Runtime Configuration Database (described on page 39). When you select **Finish**, you will be asked if you would like to define another input. Answering No will close the Wizard.

Note that if you didn't enter an Input Name, you won't be allowed to exit the Step 6 screen. If the name you entered is the same as the name of an existing MID file, the system will tell you so and go back to Step 6 to let you enter another name.

The MCA Input Definition Editor

You'll have to use the MID Editor only if you want to change default settings for any of the InSpector's programmable components. The remainder of this chapter tells you how to use the MID Editor to make those changes.

Basic Concepts

We'll begin with some basic concepts that are important to understand before actually getting into the details of how you define your system's MCAs.

Multiple MCA Configurations

Since MCA definitions are saved in disk files, you can have as many definitions as you like. For example, you might have one MCA defined as an 1K Sodium Iodide Spectroscopy MCA in one file and another as a 2K Sodium Iodide Spectroscopy MCA in another file. Before you start an experiment you simply pick the configuration you want to use.

Because an MCA definition file can include any or all of the MCAs that are available to your system, you can use more than one MCA at a time. However, each MCA can be included only once in a given definition file and each MCA in that file must have a unique name.

Using the MCA Definition Files

To use an MCA Definition, you must first have saved the definition to disk as a file. Once you've done that, all you have to do is load that file into InSpector's internal MCA Runtime Configuration Database. From that point on, all MCA operations will use the configuration information that was stored in the Definition File. To change to a new configuration, all you have to do is replace the database's contents with a new file.

Starting the MCA Input Definition (MID) Editor

Start the MCA Input Definition Editor (MID) by double clicking on its icon in the Genie-2000 folder. The result will be the application window shown in Figure 9.

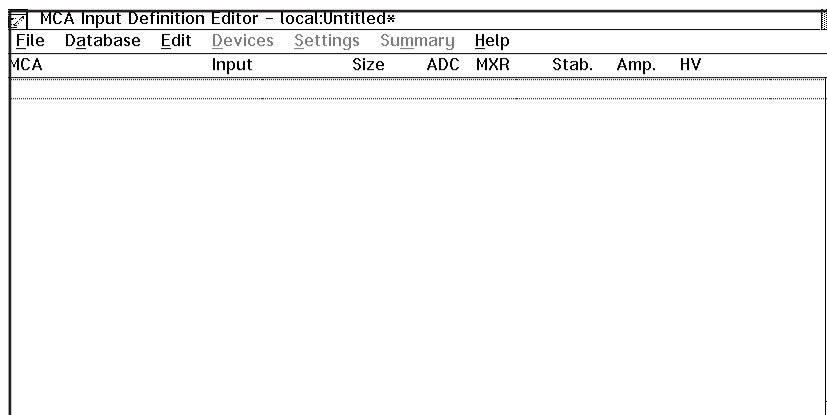


Figure 9 The MID Editor Window

Note that the phrase “local:Untitled” in the title bar, means that the MID Editor is connected to the local VDM and that no file is currently open; this is the default condition in a non-networked environment.

Building an MCA Definition

Building an MCA Definition means:

- Selecting the MCA and front end hardware to be used for each input through the Device Menu.
- Defining the operating characteristics and modes for each MCA and its front end hardware through the Settings Menu.

In this section we’ll explain how to add (and delete) the MID editor’s MCA entries and will explain what the definition entry consists of and the next section tells how to define the InSpector MCAs.

The remainder of this chapter discusses how the definition is saved to a disk file, how a definition can be edited, and how to use a definition by loading the file into the MCA Runtime Configuration Database.

Adding an MCA

The Edit menu, shown in Figure 10, is used to add MCA hardware to or delete MCA hardware from an MCA Input Definition.



Figure 10 The Edit Menu

To add an MCA, click on the **Add MCA** command in the **Edit** menu, which will pop up the “Add MCAs to Definition Table” Dialog Box.

Figure 11 shows a typical Add MCA list box, allowing you to add an InSpector MCA to the MCA Definition Table. You can add more InSpector MCAs to the definition at any time with this command.

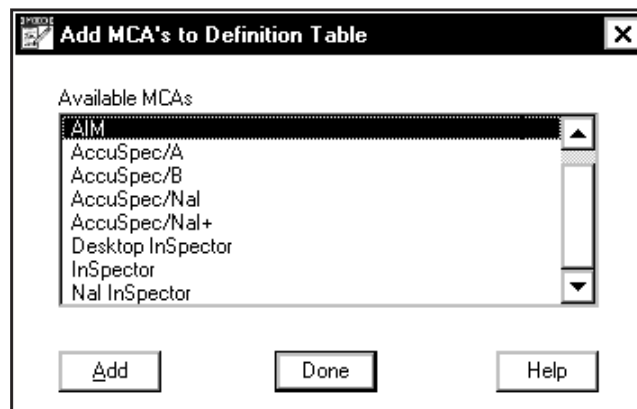


Figure 11 The Add MCA Dialog

To add an MCA to your definition, you can:

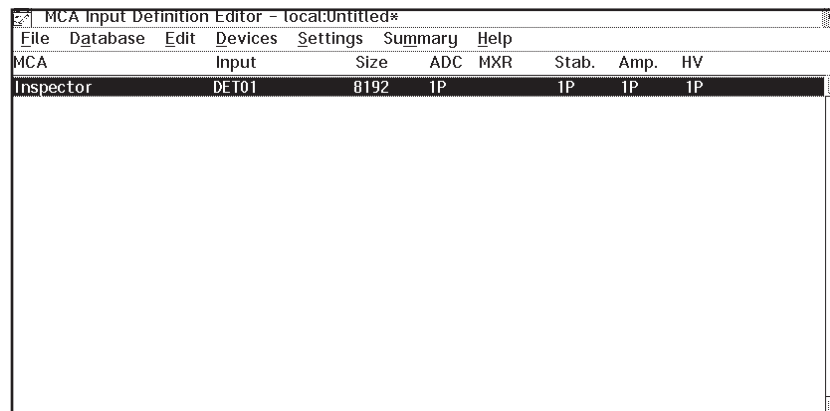
1. Click on your choice, then click on the **Add** button, or
2. Double click on your choice.

Either way, you'll see an entry added to the MCA Definition Table for each such selection you make. When you've added your MCA to this definition, click on the **OK** button to return to the main MID window.

Figure 12 shows the result of using this process to add a single InSpector MCA to the Definition Table. Please remember that this display, as well as many others in this chapter, are examples of what you *might* see; your display may not be identical.

Interpreting the Definition Entry

As you can see in Figure 12, adding the entry put more than just the name of the MCA in the definition table. We'll take a brief look at the other items in the entry now. As we get further into the definition process we'll cover them in greater detail. Note the letter following the unit number in each Definition Table item: an **M** indicates a manually controlled unit, and a **P** indicates a programmable unit.



MCA	Input	Size	ADC	MXR	Stab.	Amp.	HV
Inspector	DET01	8192	1P		1P	1P	1P

Figure 12 An InSpector Has Been Added to the Table

MCA

This is the type of MCA device being used for this particular entry in the table.

Input

This is the name that will be used to refer to this specific hardware entry in the table. The MID Editor automatically assigns these names sequentially as **DETnn**, starting with **nn=01**. As we'll see in "Input Name" on page 34, you can easily change these names to something you find more meaningful.

Size

This is the number of data channels assigned to this input.

ADC

This column displays the type of ADC associated with the MCA.

MXR

This column is for multi-input hardware; it doesn't apply to the InSpector.

Stab. (Stabilizer)

This column describes the Stabilizer associated with the MCA.

Amp

This column describes the Amplifier associated with the MCA.

HV

This column describes the High Voltage Power Supply associated with the MCA.

Deleting an MCA

If you change your mind and want to remove an MCA that you have added to the definition, you can do it easily by:

1. Clicking on the table entry you want to delete to select it.
2. Clicking on the **Delete MCA** command in the **Edit** menu. When you do that, the Dialog Box shown in Figure 13 will pop up. Click on **OK** to remove the entry.

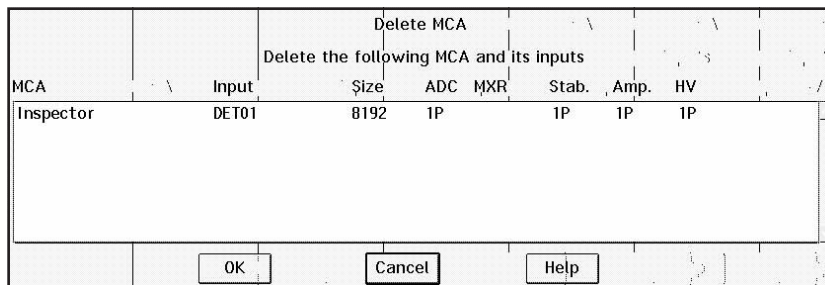


Figure 13 The Delete MCA Dialog

Defining an MCA

This section discusses setting up an InSpector MCA, which has a fully programmable front end. That is, its Amplifier, ADC, Digital Stabilizer, Power Manager, and High Voltage Power Supply are all controlled from the PC rather than manually with front panel knobs and switches.

To begin, click on the MCA entry in the Definition Table that you want to set up.

Device Setup

The **Devices** menu, shown in Figure 14, sets the parameters for the InSpector's MCA and Amplifier. Those Devices which are disabled (grayed) do not have any settable parameters.

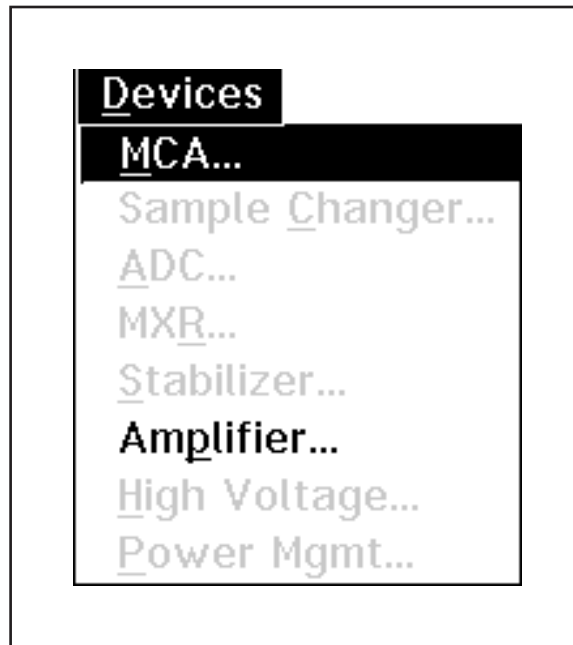


Figure 14 The Device Setup Menu

MCA

The **MCA** command in the **Devices** menu pops up the Dialog Box shown in Figure 15.

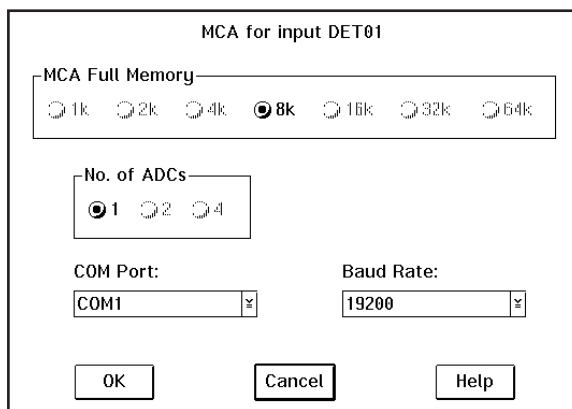


Figure 15 The MCA Device Setup Dialog

Full Memory and Number of ADCs

You can select the Number of ADCs and the MCA Full Memory size here. Note that not all models of the InSpector allow these parameters to be changed.

Com Port and Baud Rate

This dialog lets you select the host computer's communications port and set its data transmission (baud) rate. The com port setting must be the same as the one you have connected the InSpector to on your computer. When a datasource is opened, the InSpector's baud rate, data bits, stop bit and parity are automatically set to match the host computer's data transmission parameters.

Although the baud rate can be set as high as 115 200, your computer may not be able to sustain this rate without communication errors. Many laptop computers are known to operate at 57.6 kbaud. If yours does not, the default 19 200 baud rate allows reliable operation with most computers.

At lower baud rates, the `SAD_TIMEOUT` parameter in your `CONFIG.SYS` file should be increased to prevent VDM Timeout errors. To calculate the proper `SAD_TIMEOUT` value, multiply the spectrum size in channels by 484 and divide the result by the proposed baud rate. For example, a 4K channel spectrum at 1200 baud would use a `SAD_TIMEOUT` value of:

$$\frac{4096 \times 484}{1200} = 1652.$$

Amplifier

Under the **Amplifier** command, shown in Figure 16, you use the Device Driver drop down list to select either the programmable InInspector Amplifier or an external Manual Amplifier.

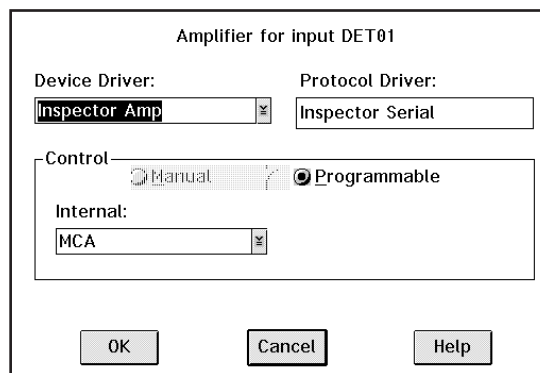


Figure 16 The Amplifier Device Dialog

The Settings

The commands in the Settings menu, shown in Figure 17, set the operating parameters for the InInspector's MCA and front-end electronics.

Many of the parameters can be adjusted both in the MID Editor and in the Acquisition and Analysis application. The descriptions of each of the parameters specifies which controls can be changed only in the MID Editor.

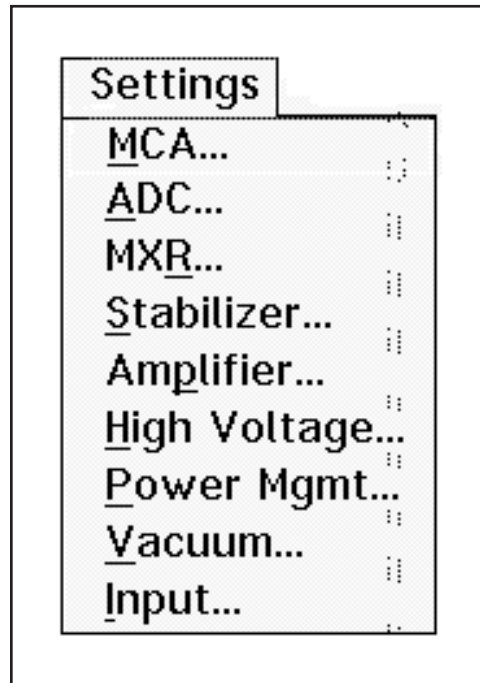


Figure 17 The Settings Menu

MCA

The InInspector MCA does not have any adjustable controls.

ADC

Click on **ADC** to see the Dialog Box shown in Figure 18, which is used to set the initial operating parameters for the InInspector's programmable ADC.

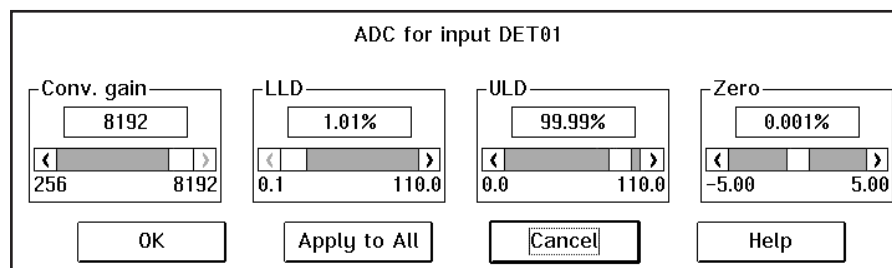


Figure 18 The ADC Settings Dialog

Since the ADC's controls may need to be changed often in the course of daily work, they can be adjusted both here and in the Acquisition and Analysis application.

Note: This window's initial focus is on the **Cancel** button; pressing the keyboard's ENTER key after making changes in this dialog box will cancel the changes. Be sure to click on the **OK** key to accept the changes.

Conv. Gain

This control sets the Conversion Gain of the ADC over the range of 256 channels to 8192 channels. Clicking either on the arrows at the ends of the Scroll Bar or in the area to either side of the Scroll Bar's "Slider" will change the gain by a factor of two.

LLD

The ADC's Lower Level Discriminator (LLD) can be set from 0.1% to 110.0% of the ADC's full scale input.

ULD

The ADC's Upper Level Discriminator (ULD) can be set from 0.0% to 110.0% of the ADC's full scale input.

The window between the LLD and ULD settings is used as a "filter" to limit the energy range to be considered by the ADC. Only signals within this window will be converted.

Zero

The ADC's Zero is factory set for each conversion gain, so that a Zero setting of 0% corresponds to zero intercept (zero energy input stores in channel 3, the first channel used for spectral data storage) for that conversion gain. The Zero control, with a range of -5.0% to +5.0% of full scale, can be used to change the zero intercept to another channel.

Stabilizer

The InSpector's Stabilizer maintains the stability of high resolution spectroscopy in applications involving long count times or high count rates. It accomplishes this by using reference peaks in the spectrum and correcting the ADC's conversion gain or its zero intercept, or both, to keep these peaks from drifting. The count rates in these reference peaks should be high enough to be significantly more than the background in their chosen stabilizer windows.

Selecting the **Stabilizer** command pops up the Dialog Box shown in Figure 19. Some of the controls shown in the figure may not be available on your InSpector.

Note: This window's initial focus is on the **Cancel** button; pressing the keyboard's ENTER key after making changes in this dialog box will cancel the changes. Be sure to click on the **OK** key to accept the changes.

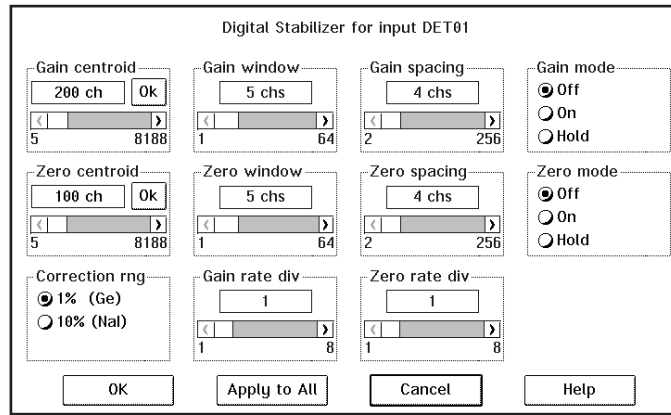


Figure 19 The Stabilizer Settings Dialog

Figure 20 shows the relationship between the Stabilizer's Centroid, Window and window Spacing on a typical peak.

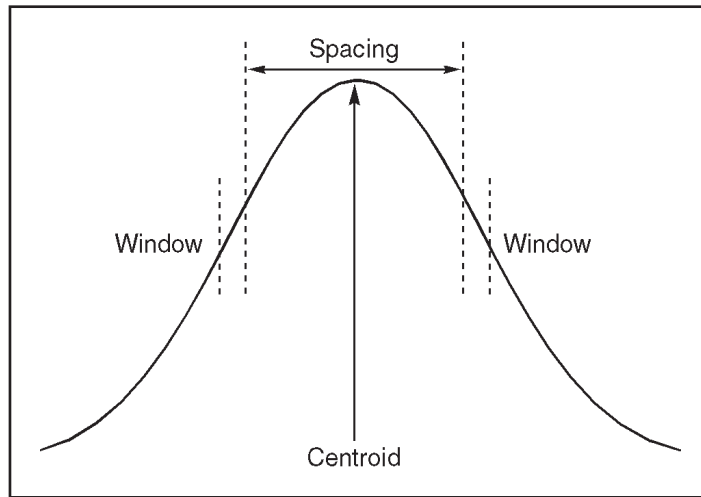


Figure 20 Relationship Between Stabilizer Functions

Gain Centroid

This control sets the reference channel at the high end of the spectrum for gain stabilization, since gain drift is more pronounced in the upper channels. The centroid's channel number can also be typed in from the keyboard, then accepted with the Ok button within the control.

Zero Centroid

This control sets the reference channel at the low end of the spectrum for zero intercept stabilization, which prevents interference from the effects of gain drift. The centroid's channel number can also be typed in from the keyboard, then accepted with the Ok button within the control.

Gain and Zero Window Controls

These controls set the width (in channels) of the upper and lower sampling windows for each Mode. The stabilizer uses this setting as its sampling range.

Gain and Zero Spacing Controls

These two controls set the spacing (in channels) between the upper and lower sampling windows for each Mode. The windows should be placed so that a shift in the peak reflects a significant change in the count rate through the respective windows. For example, for broad peaks, it is not advisable to choose a window with narrow spacing.

Gain and Zero Mode Controls

The Stabilizer's Gain or Zero, or both, can be set to Off, On or Hold.

If the drift in either mode (zero or gain) exceeds the Correction Range, the overrange flag will be set and that mode will be changed to *hold*. Set that mode to *off* to clear the overrange flag, then correct the cause of the excessive drift before returning the mode to *on*.

On enables stabilization for the specified mode, allowing the Stabilizer to compare the incoming data to the Mode's Centroid and Window settings, then compensate for data below (or above) the Centroid.

Off disables stabilization for the specified mode and sets the correction adjustment to zero and clears the overrange flag if it was set.

Hold disables stabilization for the specified mode, but maintains the current correction at the Stabilizer's output.

Correction rng

This control (not available on the NaI InSpector) selects the Gain Correction range that can be provided to correct for drift. Select $\pm 1\%$ for a germanium detector or $\pm 10\%$ for a sodium iodide detector. This control cannot be set in the Aquisition and Analysis application.

Gain and Zero Rate Div

The Rate Divisor controls, which can be set to 1, 2, 4, or 8, adjust the count rate dividers at the input to the correction registers for each Mode. For high count rate reference peaks, increasing the Divider value will smooth out the correction applied to the system and minimize any peak broadening. These controls cannot be set in the Aquisition and Analysis application.

Amplifier

Selecting the **Amplifier** command will pop up the Dialog Box shown in Figure 21. Some of the controls shown in the figure may not be available on your InSpector.

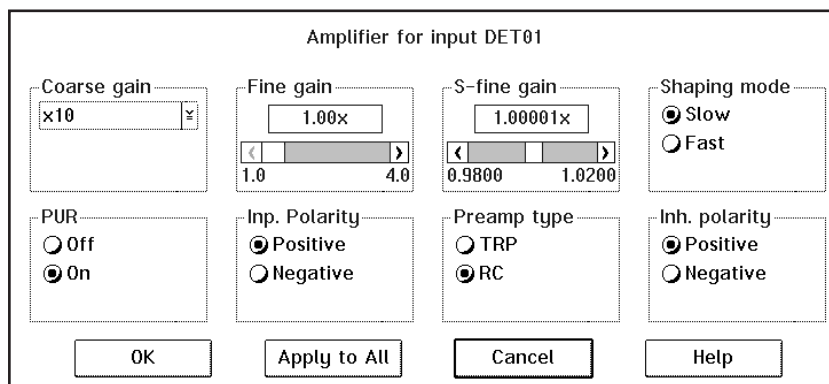


Figure 21 The Amplifier Settings Dialog

Though most of these controls can also be adjusted in the Aquisition and Analysis application, the Input Polarity, the Preamp Type, and the Inhibit Polarity can only be changed in this Dialog Box.

Note: This window's initial focus is on the **Cancel** button; pressing the keyboard's ENTER key after making changes in this dialog box will cancel the changes. Be sure to click on the **OK** key to accept the changes.

Coarse Gain

The Amplifier's **Coarse gain** setting is selected from the drop down list.

Fine Gain

The **Fine gain** control, which is set by a Scroll Bar, provides a gain multiplier from 1 to 4.

S-fine Gain

The **S-fine Gain** control can be used to establish a specific gain (energy per channel).

Shaping Mode

This control sets the amplifier's shaping time constant to **Slow** (approximately 4 μ s) shaping or **Fast** (approximately 1 μ s) shaping. For the NaI InSpector, the shapings are 1 μ s (Slow) and 0.5 μ s (Fast).

PUR

This control turns the amplifier's Pileup Rejector (PUR) **On** or **Off**. When PUR is *on*, a Live Time correction is performed for pulses that are piled up.

Inp. Polarity

The **Inp. Polarity** control matches the polarity of the amplifier's Input to the polarity of the preamplifier's Output. This control can be set only in this Dialog Box; it cannot be changed in the Acquisition and Analysis application.

Preamp Type

Use the **Preamp Type** control (not available on the NaI InSpector) to specify whether your preamp is a TRP (transistor reset preamplifier type) or an RC (resistor-capacitor type) preamplifier. This control can be set only in this Dialog Box; it cannot be changed in the Acquisition and Analysis application.

Inh. Polarity

If you are using a TRP preamplifier, the **Inh. Polarity** control (not available on the NaI InSpector) matches the polarity of the amplifier's Inhibit (reset) input to the polarity of the preamp's Inhibit output. This control can be set only in this Dialog Box; it cannot be changed in the Acquisition and Analysis application. Refer to "Adjusting the TRP Reset Pulse" in Appendix D, "Technical Information", of the *Genie-2000 Operations Manual* for instructions on adjusting the TRP's Inhibit pulse width for proper operation.

High Voltage

The **High Voltage** command, shown in Figure 22, adjusts the High Voltage Power Supply (HVPS). Some of the controls shown in the figure may not be available on your In-Spector.

Note: This window's initial focus is on the **Cancel** button; pressing the keyboard's ENTER key after making changes in this dialog box will cancel the changes. Be sure to click on the **OK** button to accept the changes.

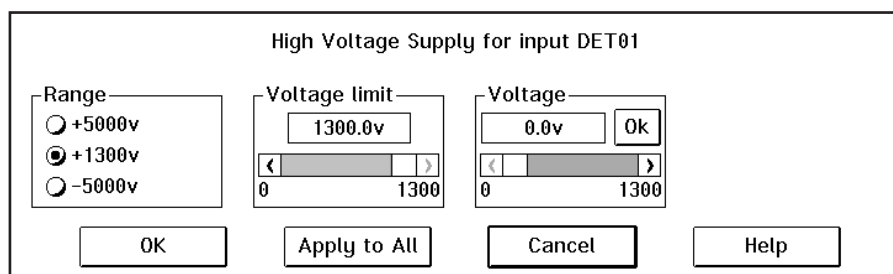


Figure 22 The HVPS Settings Dialog

Range

The **Range** control (not available on the NaI InSpector), which must be set *before* the Voltage Limit or Voltage Control is adjusted, sets HV Power Supply's absolute voltage limit to positive 1300 volts for a sodium iodide or cadmium telluride detector, or positive or negative 5000 volts for a detector requiring no more than 100 μ A of bias current, such as a germanium detector. This automatically changes the upper value for the Voltage Limit and Voltage controls. This control can be set only in this Dialog Box; it cannot be changed in the Acquisition and Analysis application.

Voltage Limit

The **Volt. limit** control establishes the HVPS's maximum output voltage within the selected range. It must be set *before* the Voltage control is adjusted. This control can be set only in this Dialog Box; it cannot be changed in the Acquisition and Analysis application.

Voltage

After setting the Voltage Limit, the **Voltage** scroll bar sets the output of the HVPS between the Voltage Limit's minimum and maximum settings. The voltage can also be typed in from the keyboard, then accepted with the Ok button within the control. The Acquisition and Analysis application allows you to adjust the output voltage, as well as turn the HVPS on and off and reset it.

Power Management

The **Power Management** Dialog Box (not available on the DeskTop InSpector), shown in Figure 23, is used to set several of the InSpector's Power Management controls, all of which can also be changed in the Acquisition and Analysis application. Some of the controls shown in the figure may not be available on your InSpector.

Note: This window's initial focus is on the **Cancel** button; pressing the keyboard's ENTER key after making changes in this dialog box will cancel the changes. Be sure to click on the **OK** key to accept the changes.

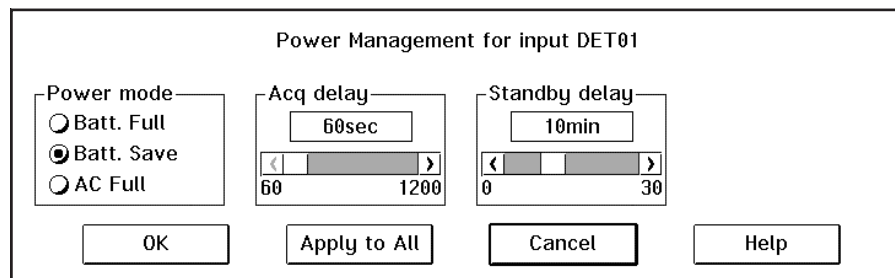


Figure 23 The Power Management Settings Dialog

Power Mode

The **Power mode** controls let you switch the InSpector's operating mode.

The **Battery Full** mode keeps the electronics on at all times using power from the instrument's batteries.

The **Battery Save** mode minimizes battery drain by turning off some of the InSpector's circuits whenever possible. When data acquisition is initiated, the system changes to the Battery Full mode and data acquisition begins after the Acquisition Delay time has elapsed (not available on the NaI InSpector). This allows time for the high voltage to reach its preset value and for the internal electronics to become

thermally stable. When acquisition is finished, the system returns to the Battery Save mode.

In the **AC Full** mode, the InSpector operates from battery port A. If the AC Power Adapter is connected to this port, it will supply power to the InSpector. The AC Adapter's User's Manual tells you how to connect it to the battery port with the supplied connecting cable. If ac power is lost, the Power Manager will automatically switch to port B, allowing its battery to continue supplying power. When ac power is restored, the Power Manager will switch back to port A.

Acq. Delay

The **Acq. Delay** control (not available on the NaI InSpector), which is enabled only in the Battery Save mode, sets a delay time which holds off actual data acquisition until the high voltage has reached its preset value and the internal electronics are thermally stable. A minimum delay of one minute is provided to allow the high voltage to increase to its preset value and the internal electronics to warm up. The internal electronics will stabilize to within 0.1% of their final settings in less than five minutes.

Standby Delay

The **Standby delay** control (enabled only in the Battery Save mode) sets the amount of time that the system can remain idle (neither acquiring data nor communicating with the host computer) before it automatically changes to Standby. In Standby, all electronics except the Power Manager are shut down until the next command is received from the host. A setting of 0 minutes will prevent the InSpector from switching to Standby.

Input

The **Input** command is used to change the name of the Input and set up the structure of its memory via the Dialog Box shown in Figure 24. These commands are not available in the Acquisition and Analysis application.

Note: This window's initial focus is on the **Cancel** button; pressing the keyboard's ENTER key after making changes in this dialog box will cancel the changes. Be sure to click on the **OK** key to accept the changes.

Input Name

The default DETnn name is the name displayed here, allowing you to easily change it to a more meaningful name, such as "H2OSampl", up to a total of eight characters.

Detector Type

Use this drop-down list to select the type of detector to be used with this MCA; this also assigns appropriate default values to the spectrum display and analysis parameters.

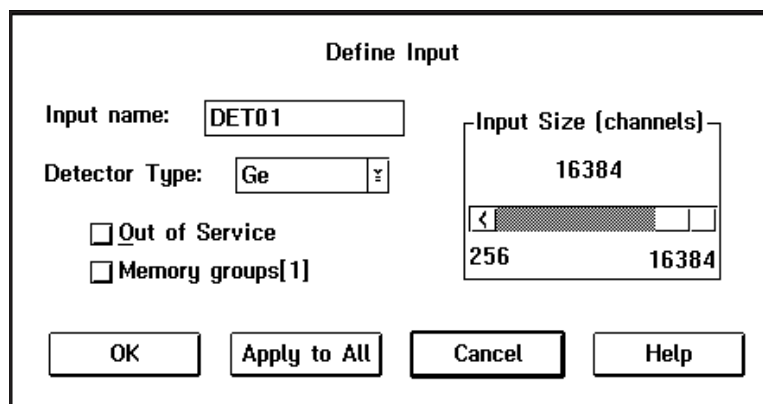


Figure 24 The Define Input Dialog

Input Size

This parameter defaults to 8K, the number of channels assigned during Device setup for the MCA, on the assumption that you'll be using "Full Memory" for your data acquisition. To use less than the maximum available memory size, use this control to select the size you want to use. For instance, for NaI spectra, you wouldn't want to use more than 1024 channels.

Out of Service

This Check Box allows you to place this Input temporarily "out of service". That is, it will remain as an entry in your MCA Definition File but will not be available for data acquisition. It is meant to be used when the MCA or its front end electronics are temporarily disconnected.

Saving the Input Definition

Having completed our definition, the next step is to save it in a disk file so it can be used in the future. To remind you that you need to do this, you'll see an asterisk (*) in the Title Bar, next to the name of the current definition. The asterisk means that the definition has been changed but not yet saved. To save your definition, click on the **File** menu's **Save** command. When you do that, you'll see the Dialog Box shown in Figure 25.

CAUTION If you have changed an existing Input Definition, saving it will set its calibrations to default and will clear the Acquisition Start time.

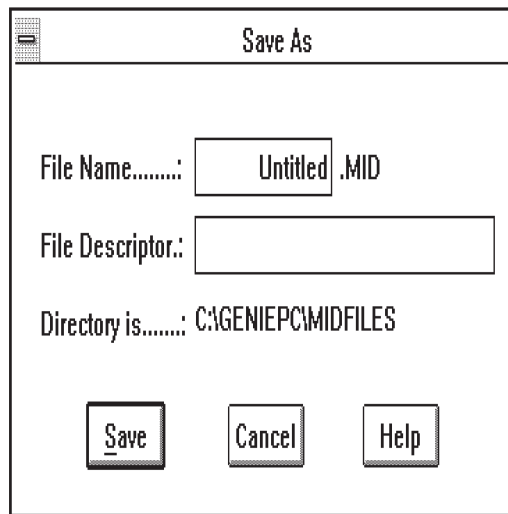


Figure 25 The Save As Dialog

Save and Save As

Even though you selected the Save command, you'll notice that the Dialog Box is labeled Save As. This is because the Save command is really a "Replace the old version with a new one" command, and we don't have an "old version" of our table to replace (ours is still labeled "Untitled", which means it has never been Saved). The system realizes this and automatically pops up the Save As Dialog Box so we can assign a name to our table.

Using Save As

Since the word **Untitled** displayed in the File Name Text Input box is already highlighted, all you have to do to replace it is type any legal file name, then press the TAB key to move to the File Descriptor input box.

The File Descriptor

The text cursor is now located in the input field called File Descriptor. This a 32-character description that is stored with your file to make it easier to locate it when you want to use it again.

Changing the Summary View

Before going on to see how to edit an existing Input Definition Table, one that you've built previously and saved to disk, there's one more menu to look at. This is the Summary menu, which is shown in Figure 26.

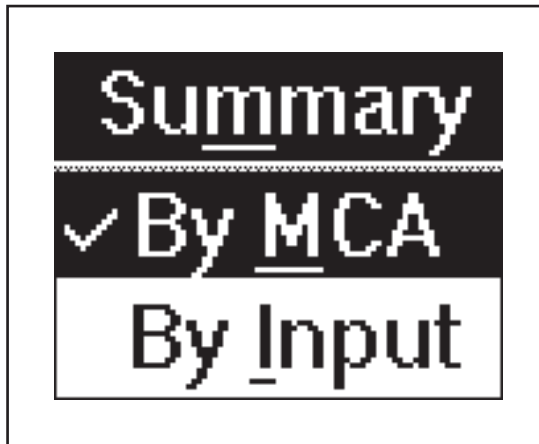


Figure 26 The Summary Menu

The **Summary** menu has two commands: **By MCA** and **By Input**, which change the order in which the information in the Input Definition Table is displayed. By MCA means that the first column of the table will display the MCA type that is being used for each entry. If you choose By Input, the MCA and Input columns will be reversed in the display and the Inputs will be sorted alphabetically.

You can choose either method, but in the case of systems with a large number of inputs, “By Input” is an easier display to understand than “By MCA”.

Editing an MCA Definition

The procedures that we used in the previous sections can also be used to edit MCA Input Definitions that have already been saved to disk.

Opening an Input Definition File

To edit a file that has not been loaded into the MCA Runtime Configuration Database, all you have to do is read it into the Input Definition Editor with the **File** menu’s **Open** command, which uses the Dialog Box shown in Figure 27. If you know which file you want to edit, double click on its name to open it in the editor.

If you have already loaded the definition into the MCA Runtime Configuration Database, it must first be unloaded before it can be opened in the editor. See “Unloading the Database” on page 41 for the procedure to use.

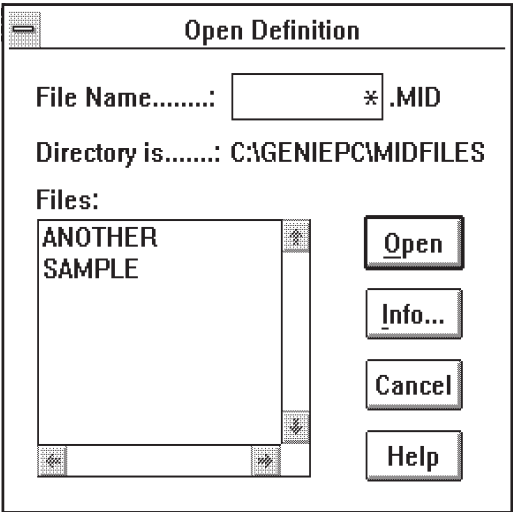


Figure 27 The File Open Dialog

Viewing the File Details

If you're not sure which file you want to edit, click on the name of the file that you think is the correct one, then click on the **Info** button to see further information about the file. Doing that will pop up the Dialog Box shown in Figure 28.

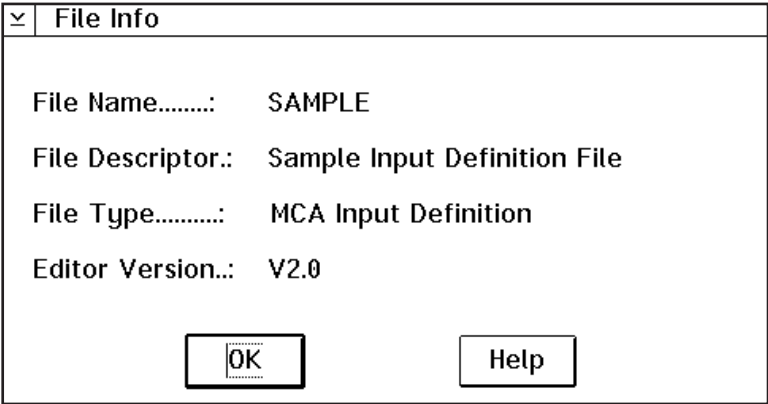


Figure 28 The File Info Display

The key piece of information here is the File Descriptor, which is the “extended file name” that you added when the file was originally saved. From this you should better be able to determine if the file you selected is the one you want.

When you’re finished with the file details, click on **OK** to return to the Open Dialog Box. Now you can either click on the **Open** button to open the file you selected or select a different file and view its details.

Editing the Definition

All of the menus and commands available for defining an MCA are also used for editing a definition. Just click on the entry you want to change and apply the commands as before. When you’ve finished editing the definition, **Save** it.

The New Command

If you want to create a totally new MCA Definition, the **File** menu’s **New** command clears the definition table so you can begin a new definition.

Because New is a destructive operation, selecting it will cause the program to ask for a confirmation in one of two ways:

1. If the Definition currently being displayed has not been changed since it was last saved (no asterisk in the Title Bar), you will be asked if you want to erase the current Definition. Click on **OK** to erase it, or **Cancel** to return to the Input Definition Editor.
2. If the Definition currently being displayed has been changed but not saved, you will be given a chance to save it.

The Input Definition Report

The **File** menu’s **Report** command always saves to a disk file, but if you click on **Yes** in the dialog box that pops up, you can send the report to a disk file *and* print the report as well. Click on **No** to save it to a disk file without printing the report.

Using MCA Definition Tables

The whole purpose behind building MCA Input Definitions is to let the InSpector know the number and types of MCAs you’ll be using with your system. You do this by loading one or more MCA Definition Files into the MCA Runtime Configuration Database.

This database is shared by all of the programs which make up the InSpector software package, and is used by those programs to gain access to the actual MCA hardware in your system. In this section we'll take a look at the procedures used for setting up that database.

Viewing the Current Database

To view the current contents of the database, click on the **Database** menu's **View** command, which will pop up the display shown in Figure 29. If you click on a line in the list, you can use the Device and Settings menus to look at details of that definition. Click on **OK** to close the View window.

MCA	Input	Size	ADC	MXR	Stab.	Amp.	HV
Inspector	DET01	8192	1P		1P	1P	1P
Inspector	DET02	4096	1P		1P	1M	1P

Figure 29 Viewing the Database

Loading and Unloading Definitions

Before you can use an MCA Definition, you'll have to load it into the database, so we'll start with that process. Note that you can't edit a loaded database; you'll first have to unload it as described in "Unloading the Database" on page 41).

The Load/Unload functions will be disabled while any Acquisition and Analysis applications are running and have open datasources. This prevents one user from altering the runtime database while another user is accessing it.

Loading the Database

A new Definition can be loaded into the Database with the **Load to** command, which brings up the Dialog Box in Figure 30, which lets you choose the file to be loaded into the database.

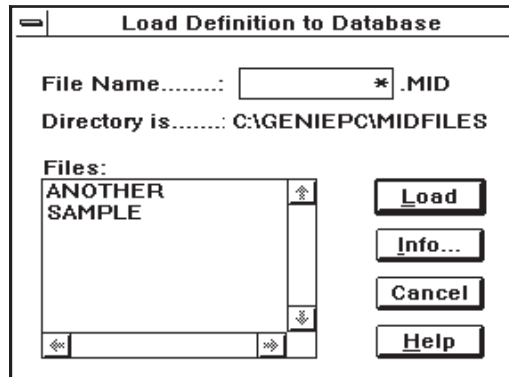


Figure 30 The Load To Dialog

Loading Multiple Definitions

Though you will usually use only one definition at a time, there may be times when you want to load more than one definition. To do this, be sure that each of the Input names in the Definition Files is unique. As long as both of these conditions are true, you can load as many Input Definitions as you like.

If you try to load an Input Definition which contains a duplicate Input name, the system will display a message telling you that the requested Load can't be done.

Unloading the Database

Though some of the programmable front end controls, such as ADC Gain or Amplifier Gain, are initially set with the MCA Input Definition Editor, many may also be adjusted in the Acquisition and Analysis application while you're collecting data. These adjustments can be stored in the database (with File | Save), and when you Unload the database, are saved in an Input Definition File for future sessions.

The Unload Process

To unload a Database, click on the **Database** menu's **Unload from** command, which will bring up the Dialog Box shown in Figure 31. If several choices are listed, there are multiple definitions in the database.

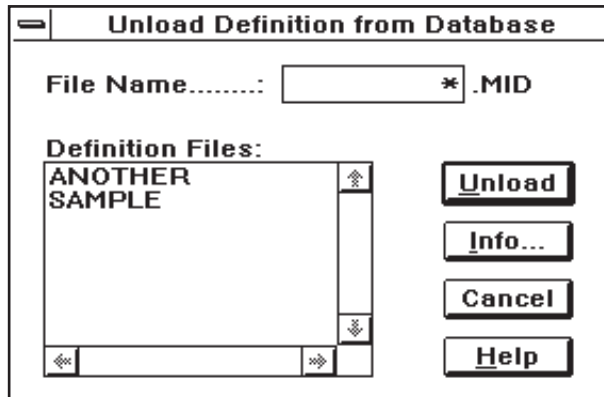


Figure 31 The Unload From Dialog

Click on the one you want to unload, then click on the **Unload from** button. Note that this menu item is disabled if the MCA Runtime Configuration Database is currently being used by another application.

A. Technical Information

Status Screen Entries

Though the majority of the entries in the Status Report are direct reflections of the MCA Input Definition Editor settings or the Acquisition and Analysis application's Adjust settings, a few of them are explained in greater detail here.

Stabilizer

The Zero and Gain correction values are the numbers representing the amount of correction made to the ADC. The range of correction is 0 to 4095, with 2048 representing *no* correction. If data drift causes either the Gain or the Zero correction to reach the limit of 0 or 4095, that stabilizer function will be changed to Hold and an overrange error flag will be set. To clear the flag, set that function to *off* to clear the overrange flag (and set the value to 2048), then correct the cause of the excessive drift before returning the mode to *on*.

Rear Panel Connectors

Computer

The computer connector is a 9-pin male D-type connector.

Pin	Signal	Description
1	–	No connection
2*	TX–	Transmit Data Out – RS-232
3*	TX+	Receive Data In – RS-232
4	–	No connection
5	Gnd	Ground
6	–	No connection
7	RTS	Request to Send In – RS-232 (no function)
8	CTS	Clear to Send Out – RS-232 Space (High)

Pin	Signal	Description
9	–	No connection
Shield	Gnd	Ground

*Autobaud protocol at startup to determine baud rate: 1200, 9600, 19.2 k, 38.4k, 57.6k, or 115.2 k; 8 data bits; even parity; 1 stop bit.

Preamp

This 9-pin female D-type connector provides power for the detector’s preamplifier.

Amp

This test point monitors the InSpector amplifier’s output. At this point, a full scale signal is +7 V. When using this test point, connect the scope ground to any convenient unpainted chassis point on, or any access screws on the bottom of, the InSpector.

High Voltage

This SHV connector provides detector bias. The HVPS programmable range is:

- +1300 V at 500 μ A
- +5000 V at 100 μ A
- 5000 V at 100 μ A

TRP Reset

If your system includes a Model 2101 TRP Preamplifier, connect a cable between the InSpector’s TRP RESET connector and the 2101’s INHIBIT connector.

HV Inh

The High Voltage Inhibit feature shuts down the high voltage supply if the detector warms up. If you are using this feature, connect a cable between the InSpector’s HV INH connector and the preamp’s HV INHIBIT connector.

Sig In

Connect a cable between the InSpector’s SIG IN connector and the preamplifier’s output signal connector.

Power

Connect the ac adapter to the InSpector’s POWER connector.

B. Specifications

Input/Output

SIG IN – Programmed to accept preamp signals or external amplifier outputs; BNC connector.

INT AMP MODE – Accepts positive or negative tail pulses; amplitude 10 V divided by the selected gain, 25 V maximum; rise time less than shaping time constant; decay time constant: 40 μ s to ∞ ; polarity programmable; R_{in} : 9 k Ω > R_{in} > 0.95 k Ω , R_{in} changes with Gain and Polarity setting.

EXT AMP MODE – Accepts positive unipolar or bipolar (positive lobe leading) pulses for PHA; amplitude 0 to +10 V, +12 V maximum; rise time 0.25 to 100 μ s maximum; width 5 μ s minimum; input impedance 1k Ω , direct coupled.

TRP RESET – Accepts a standard logic signal from an associated reset preamplifier; used to extend the Dead Time signal, inhibit and reset the pileup rejector and provide a reject to the ADC during the preamplifiers reset cycle; positive true or negative true signal polarities, programmable; Loading 4.7 k Ω ; Logic High \geq 3.6 V, Logic Low \leq 1 V; 0 to +12 V maximum; BNC connector.

HV INH – Logic Low or ground inhibits the HV outputs; max logic low \leq 0.7 V; logic high \geq 2.0 V or open circuit enables; 0 to +12 V maximum; BNC connector.

PREAMP – \pm 12 V dc, \pm 24 V dc; 9-pin connector.

HIGH VOLTAGE – Programmable dual range and polarity; \pm 5000 V dc with 100 μ A output current capability or +1300 V dc with 500 μ A output current capability; programmable range, resolution of 1 part in 4096; rear panel SHV connector (isolated from chassis ground by 47 Ω resistor).

DATA INTERFACE – EIA RS-232 interface to host personal computer; 9-pin connector; auto sense selection of data transfer rates (115.2, 57.6, 38.4, 19.2, 9.6, 1.2 kbaud).

POWER – Supplies dc power to the unit; 2.5/5.5 mm rear panel connector.

Indicators

PWR – LED indicates that system power is on.

ACQ – LED indicates that acquisition is in process.

HV – LED indicates the presence of HV at the rear panel SHV connector.

FLT – LED indicates a high voltage fault, such as an inhibit or overload.

Performance

HVPS

MULTI-RANGE – Programmable +5 V to +1.3 kV, +1.3 kV to +5 kV, –10 V to –5 kV; resolution to within 1 part in 4096; rear panel SHV connector.

LOAD CURRENT – 1.3 kV range: 500 μ A. 5 kV range: 100 μ A from 65 to 5000 V; below 65 V linearly derated at 1.3 μ A per volt.

NON-LINEARITY – $<\pm 0.3\%$ of full scale.

RIPPLE AND NOISE AT RATED LOAD CURRENT – 1.3 kV range: ≤ 5 mV peak to peak; 5 kV range: ≤ 50 μ V peak to peak.

OUTPUT STABILITY – Long term drift of output voltage is $\leq 0.01\%/h$ and $\leq 0.02\%/8$ h at constant load, and ambient temperature after a 30 minute warmup.

TEMPERATURE COEFFICIENT - $\leq \pm 50$ ppm/ $^{\circ}$ C after a 30 minute warmup.

REGULATION – $\leq 0.02\%$ variation in output voltage over the load range at constant ambient temperature.

OVERLOAD PROTECTION – Power supply will withstand any overload, including a short circuit, for an indefinite period.

CURRENT LIMIT – 1.3 kV range: 1.6 mA, maximum; 5 kV range: 350 μ A, maximum.

SETTLING TIME – < 100 V/s, turn on or turn off.

Amplifier

GAIN RANGE – Programmable from X2 to X1500, based on a 10 V full-scale output; programmable resolution of 1 part in 16 000.

SHAPING TIME – Programmable: fast (1 μ s) or slow (4 μ s).

POLE/ZERO – Automatic; 40 μ s to ∞ range; TRP: ∞ .

DRIFT –

Gain: $\leq \pm 0.0075\%/^{\circ}\text{C}$.

dc level: $\leq \pm 7.5 \mu\text{V}/^{\circ}\text{C}$.

INTEGRAL NONLINEARITY – $\leq \pm 0.05\%$ over total output range for 4 μ s shaping.

OVERLOAD RECOVERY – Output recovers to within $\pm 2\%$ of full scale output from X1000 overload in 2.5 non-overload pulse widths at full gain, at any shaping time constant, and with preamplifier matching properly set.

NOISE CONTRIBUTION – 3.5 μ V true rms, output referred to input, 4 μ s shaping, and amplifier gain ≥ 150 .

PULSE SHAPING – Near-Gaussian shape; one differentiator; two active filter integrators realizing five-pole shaping network; shaping time parameters referenced to 1 μ s are listed in the following table:

Parameter	Shaping Time Multiplier Gaussian
Time to peak	2.85
0.1% full scale output to peak	2.3
Pulse width at half maximum	2.5
Pulse width at tenth maximum	6.1
Pulse width at 1/100 maximum	7.1

RESTORER – Active gated.

SPECTRUM BROADENING – The FWHM of ^{60}Co 1.33 MeV gamma peak for an incoming count rate of 2 kcps to 50 kcps and 90% of full scale pulse height will typically change less than 10% with 4 μs shaping selected; TRP preamplifier. These results may not be reproducible if the associated detector exhibits an inordinate amount of long rise time signals.

COUNT RATE STABILITY – The peak position of a ^{60}Co 1.33 MeV gamma peak for an incoming count rate of 2 kcps to 50 kcps and 90% of full scale pulse height will typically shift less than 0.025% with 4 μs shaping selected; TRP preamplifier.

ADC

CONVERTER – 100 MHz Wilkinson.

CONVERSION GAIN – 8192, 4096, 2048, 1024, 512, 256.

LLD – Range: 0.1 to 110% of full scale; programmable resolution of 1 part in 3152.

ULD – Range: 0 to 110% of full scale; programmable resolution of 1 part in 3155.

ZERO – Range: $0 \pm 5\%$ of full scale; programmable resolution of 1 part in 3414.

INTEGRAL NONLINEARITY – $< \pm 0.025\%$ of full scale over the top 99.5% of selected gain range.

DIFFERENTIAL NONLINEARITY – $< \pm 0.9\%$ over the top 99.5% of selected gain range.

DRIFT –

Gain: $< \pm 0.009\%$ of full scale/ $^{\circ}\text{C}$.

Zero: $< \pm 0.0025\%$ of full scale/ $^{\circ}\text{C}$.

Long Term: $< \pm 0.005\%$ of full scale/24 hours at a constant temperature.

PEAK SHIFT – $< \pm 0.025\%$ of full scale at rates up to 100 kHz.

CHANNEL PROFILE – Typically flat over 90% of channel width.

Digital Stabilizer

STABILIZATION MODE – Two point stabilization using spectrum reference peaks.

PEAK RANGE – Channel 3 to 8192.

PEAK WINDOW – 1 to 64 channels.

WINDOW SPACING – 2 to 256 channels, windows symmetrically positioned on either side of peak.

CORRECTION RANGE – Zero: $\pm 1\%$ of full scale; Gain: $\pm 10\%$ or $\pm 1\%$ of full scale; programmable.

CORRECTION RESOLUTION – 1 part in 4096.

RATE DIVIDER – 1, 2, 4 or 8.

Pileup Rejector

PULSE PAIR RESOLUTION – ≤ 500 ns.

MINIMUM DETECTABLE SIGNAL – Limited by detector/preamplifier noise characteristics.

Acquisition

DATA MEMORY – 8192 channels; 32 bits per channel; battery-backed.

STORAGE MODE – PHA ADD.

ACQUISITION GROUP SIZE – Always 8192 channels.

DISPLAY GROUP SIZE – 8192, 4096, 2048, 1024, 512 or 256.

PRESET MODE – Live or Real Time (computational presets are performed by the host computer).

TIME RESOLUTION – 0.01 s.

PRESET TIME – 1 to $>10^7$ s.

TIMER STORAGE – Memory channels 1 (live time) and 2 (real time).

Physical

SIZE – 26.9 x 27.2 x 4.8 cm (10.6 x 10.7 x 1.9 in.).

WEIGHT – 3.2 kg (7.0 lb) with batteries.

OPERATING TEMPERATURE – 0-45 °C.

RELATIVE HUMIDITY – 8-80%, non-condensing.

Ordering Information

Model 1270 DeskTop InSpector components include:

- DeskTop InSpector acquisition electronics unit
- Model C1715-10 Serial communications cable
- Requires S502C or S500C Genie-PC Basic Spectroscopy Software (not included)
- Consult factory for Genie-2000 and Windows 95/NT ordering information

Options

S501 Genie-2000 Gamma Analysis Software.

S505 Genie-2000 Quality Assurance Software.

S503 PROcount-2000 Counting Procedure Software.

S506 Interactive Peak Fit

Minimum Computer Requirements

– 486 processor (486 and coprocessor recommended).

Minimum Computer Requirements

- 16 MB RAM memory (more will improve performance).
- 200 MB hard drive.
- Windows 95 or Windows NT for Genie-2000 software.

Index

A

Acquisition	
Delay control	34
Indicator	5
ADC	
Conversion gain	10, 27
LL	10, 27
Purpose of	10
Settings	26
UL	10, 27
Zero	10, 27
Adding	
An MCA	19
Amplifier	
Coarse gain	31
Fine gain	31
Gain, function of	9
Inhibit polarity	10, 31
Input polarity control	31
Input polarity, function of	9
Pole/zero	10
Preamp type control	31
Preamp type	9
PUR control	31
PUR, function of	9
Purpose of	9
Setting the	30
Shaping	9
Shaping control	31
Super-fine gain	31
Applying power	5
Asterisk	
In the title bar	35

B

Basic system components	2
Battery	
Power modes	33
Baud rate	
Auto sensing	24
Selecting	24

C

Cable	
-------	--

Connections	2
High voltage	3
Inhibit	4
Centroid	
Gain/zero, function of	11
Changing	
The input's name	34
Coarse gain, amplifier	31
Com port, selecting	24
Communications, port selection	24
Complete system components	2
Components	
Basic system	2
Complete system	2
Computer	
Connector	3
Connector pinout	43
Configuration database	39
Connecting multiple InSpectors	4
Connecting the system cables	2
Connector	
Computer	3
Reset	3
Connector pin outs	44
Conversion gain	
ADC	27
Function of	10
Correction range	
Function of	13
Stabilizer control	30
Current database, viewing the	40

D

Database	
Loading a definition to	41
Runtime configuration	39
Unloading a definition from	42
Viewing the current	40
Defining	
An MI	19
An MCA	23
Delay	
Acquisition	34
Standby	34
Deleting	

An MCA	22
Desktop InSpector	
Basic system components	2
Desktop InSpector	
Complete system components	2
Turning on	5
Device setup	23
E	
Editing	
An MCA Definition	37
An MID Definition.	37
Explanation of the status screen	43
F	
File descriptor, use of.	36
Fine gain, amplifier.	31
G	
Gain	
Amplifier, function of	9
Centroid control	29
Centroid, function of	11
Mode, stabilizer	29
Rate divisor	13, 30
Spacing, stabilizer	29
Spacing, function of	12
Window, stabilizer	29
Window, function of	12
Grounding the system	4
H	
High voltage	
Cable	3
Indicator	5
Purpose of	11
Range	11, 32
Resetting the.	11
Setting the	32
Voltage control.	33
Voltage limit	32
Voltage control.	11
Voltage limit	11
High voltage fault	
Indicator	5
HV connector pinout	44

I	
Indicators	
Acquisition	5
High voltage.	5
High voltage fault.	5
Power	5
Inhibit cable, connecting.	4
Inhibit polarity	
Control	31
Function of.	10
Input	
Command	34
Name, changing	34
Out of service.	35
Saving a definition	35
Size.	35
Input definition	
Printing.	39
Input definition	
Loading multiple	41
Opening an	37
Report.	39
Using	39
Input polarity	
Control	31
Function of.	9
Input size, setting the.	35
InSpector	
ADC settings	26
Amplifier settings.	30
Amplifier setup	25
Baud rate setting.	24
Com port setting.	24
Connecting multiple.	4
High Voltage settings.	32
Input settings	34
MCA settings	26
MCA setup	24
Stabilizer settings	27
L	
Laptop sleep mode	3, 7
LEDs	
On the front panel	5
LLD control, ADC	10, 27
LLD/ULD, function of	10
Load	
A database	41
Multiple definitions	41

M

MCA	
Database	39
Defining in the MI	23
Editing a definition	37
Runtime configuration database	39
Saving a definition	35
Using an MID definition	18
MCA input definition	
MID Wizard	15
MCA Input definition editor	
See MID editor	
MCA settings	26
MID editor	
Adding an MCA	19
MID wizard	15
MID editor	
Basic concepts of	18
Creating a new definition	39
Defining an MCA	23
Definition summary	37
Deleting an MCA	22
Editing a definition	37
Entry, defining	19
MID wizard	15
New definition	39
Saving a definition	35
Summary view	37
Using an MCA definition	18
Modes, power	33
Multiple	
InSpectors, connecting	4
MCA configurations	18

O

Opening	
An input definition file	37
Out of service	35
Overrange, clearing	29

P

Pinouts, connector	44
Pole/zero	
Function of	10
Power	
Indicator	5
Switch	5
Power manager	
Acquisition delay	34
Power management	

See Power manager

Power manager	
Modes	33
Power Manager	
Standby delay	34
Power mode control	33
Preamp	
Selecting the type	31
Types supported	9
Preamp connector pinout	44
Printing	
An input definition	39
Pulse pileup rejector	
See PUR	
PUR	
Amplifier control	31
Function of	9

R

Range	
Function of	11
High voltage control	32
Rate divisors	
Function of	13
Stabilizer controls	30
Rear panel connector pinouts	44
Reporting	
An input definition	39
Reset connector	3
Reset pulse width, setting	7
Resetting	
The HVPS (Desktop InSpector)	11
Runtime database	
Definition of	39
Deleting an MCA from	22
Loading a definition to	41
Unloading a definition from	42
Runtime configuration database	39
Runtime database	
Adding an MCA to	19

S

Save and save as, difference	36
Selecting	
A baud rate	24
The com port	24
Serial port power	3, 7
Setting	
High voltage	32
The ADC	26

The amplifier	30
The MCA	26
The Stabilizer	27
Setup	
Device	23
Shaping	
Control, amplifier	31
Function of	9
Spacing	
Gain/Zero, function of	12
Stabilizer	
Correction range	13, 30
Gain centroid	11, 29
Mode controls	29
Mode, function of	12
Overrange	29
Purpose of	11
Rate divisors	13, 30
Settings	27
Spacing, controls	29
Spacing, function of	12
Status screen entry	43
Window controls	29
Window, function of	12
Zero centroid	12, 29
Standby	
Delay	34
Status	
Indicators	5
Status screen	
Entries explained	43
Summary of MID definitions	37
Super-fine gain, amplifier	31
System	
Connections	2
Grounding	4

T

Title bar, asterisk in	35
Turning on the Desktop InSpector	5

U

ULD control, ADC	10
ULD control, ADC	27
Unloading a database definition	42
Using	
An input definition	39
An MCA definition	18

V

Virtual data manager	
See VDM	
Voltage control	
Function of	11
High voltage	33
Voltage limit	
Function of	11
High voltage control	32

W

Window	
Gain/Zero, function of	12

Z

Zero	
ADC control	27
ADC, function of	10
Centroid control	29
Centroid, function of	12
Mode control	29
Rate divisor control	30
Rate divisor, function of	13
Spacing control	29
Spacing, function of	12
Window control	29
Window, function of	12

Warranty

Canberra's product warranty covers hardware and software shipped to customers within the United States. For hardware and software shipped outside the United States, a similar warranty is provided by Canberra's local representative.

DOMESTIC WARRANTY

Canberra (we, us, our) warrants to the customer (you, your) that equipment manufactured by us shall be free from defects in materials and workmanship under normal use for a period of one (1) year from the date of shipment.

We warrant proper operation of our software only when used with software and hardware supplied by us and warrant that our software media shall be free from defects for a period of 90 days from the date of shipment.

If defects are discovered within 90 days of receipt of an order, we will pay for shipping costs incurred in connection with the return of the equipment. If defects are discovered after the first 90 days, all shipping, insurance and other costs shall be borne by you.

LIMITATIONS

EXCEPT AS SET FORTH HEREIN, NO OTHER WARRANTIES, WHETHER STATUTORY, WRITTEN, ORAL, EXPRESSED, IMPLIED (INCLUDING WITHOUT LIMITATION, THE WARRANTIES OF MERCHANTABILITY OR FITNESS FOR A PARTICULAR PURPOSE) OR OTHERWISE, SHALL APPLY. IN NO EVENT SHALL CANBERRA HAVE ANY LIABILITY FOR ANY SPECIAL, INDIRECT OR CONSEQUENTIAL LOSSES OR DAMAGES OF ANY NATURE WHATSOEVER, WHETHER AS A RESULT OF BREACH OF CONTRACT, TORT LIABILITY (INCLUDING NEGLIGENCE), STRICT LIABILITY OR OTHERWISE.

EXCLUSIONS

Our warranty does not cover damage to equipment which has been altered or modified without our written permission or damage which has been caused by abuse, misuse, accident or unusual physical or electrical stress, as determined by our Service Personnel.

We are under no obligation to provide warranty service if adjustment or repair is required because of damage caused by other than ordinary use or if the equipment is serviced or repaired, or if an attempt is made to service or repair the equipment, by other than our personnel without our prior approval.

Our warranty does not cover detector damage due to neutrons or heavy charged particles. Failure of beryllium, carbon composite, or polymer windows or of windowless detectors caused by physical or chemical damage from the environment is not covered by warranty.

We are not responsible for damage sustained in transit. You should examine shipments upon receipt for evidence of damage caused in transit. If damage is found, notify us and the carrier immediately. Keep all packages, materials and documents, including the freight bill, invoice and packing list.

Software License

When purchasing our software, you have purchased a license to use the software, not the software itself. Because title to the software remains with us, you may not sell, distribute or otherwise transfer the software. This license allows you to use the software on only one computer at a time. You must get our written permission for any exception to this limited license.

BACKUP COPIES

Our software is protected by United States Copyright Law and by International Copyright Treaties. You have our express permission to make one archival copy of the software for backup protection. You may not copy our software or any part of it for any other purpose.